

1 **SQE 1-80**



: 96510143

3"

: 35 °C

0,15 / : 35 °C

: 20 °C

998.2 / ³

10700 /

1 ³/

91

: CE,UL,CUL

- : ISO9906:2012 3B

Polyamide /

DIN W.-Nr. 1.4301

AISI 304

DIN W.-Nr. 1.4301

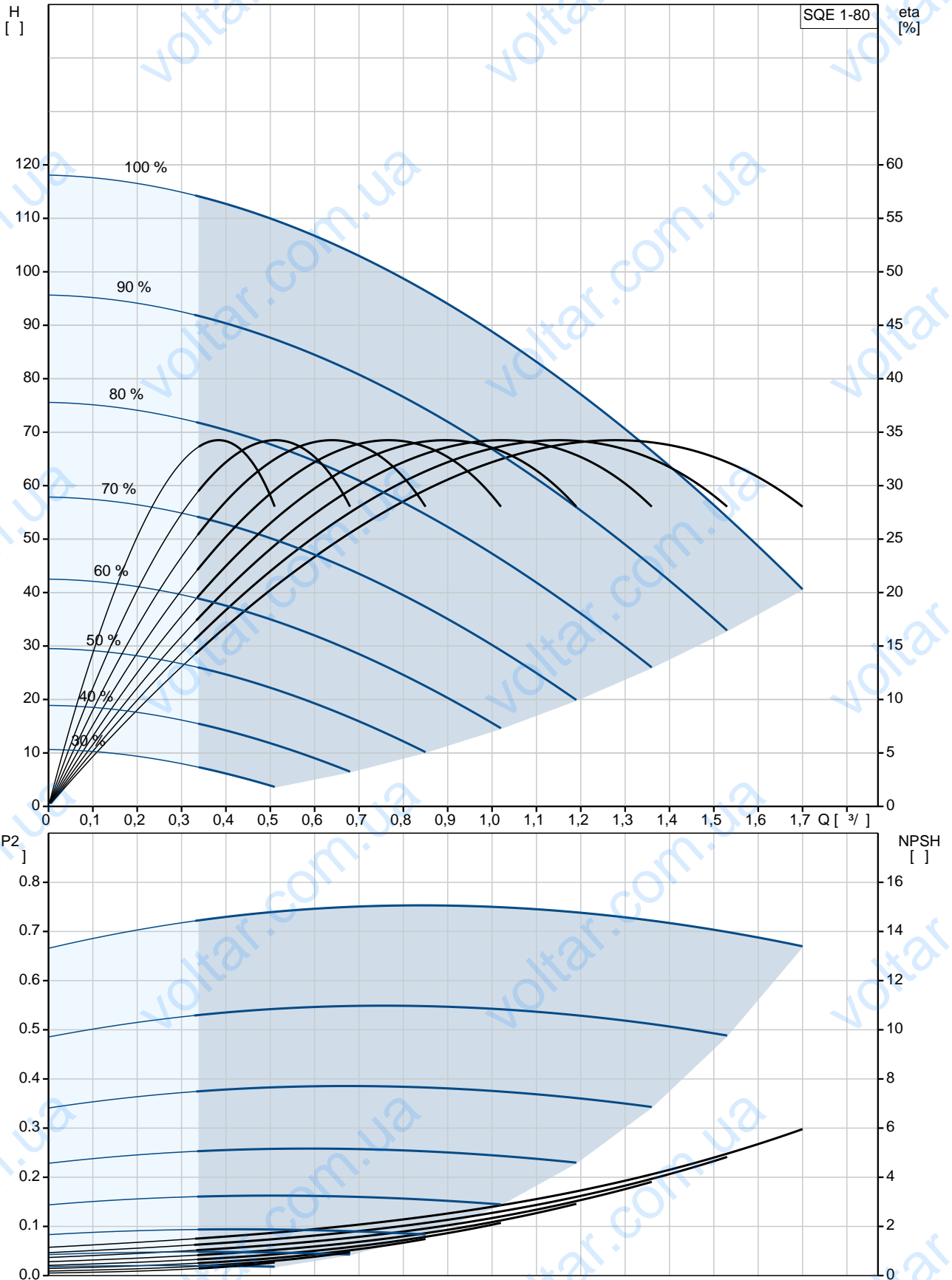
AISI 304



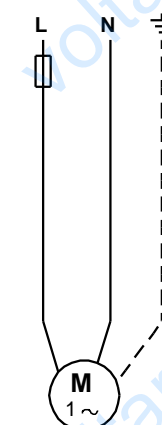
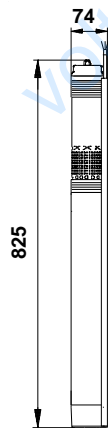
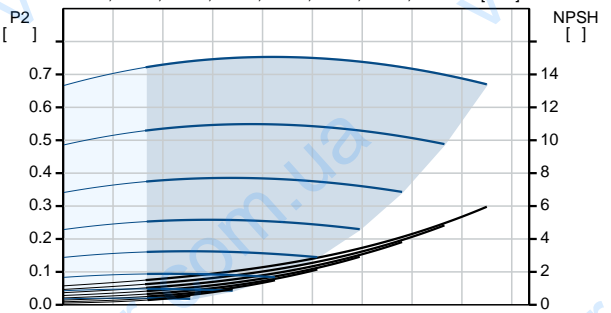
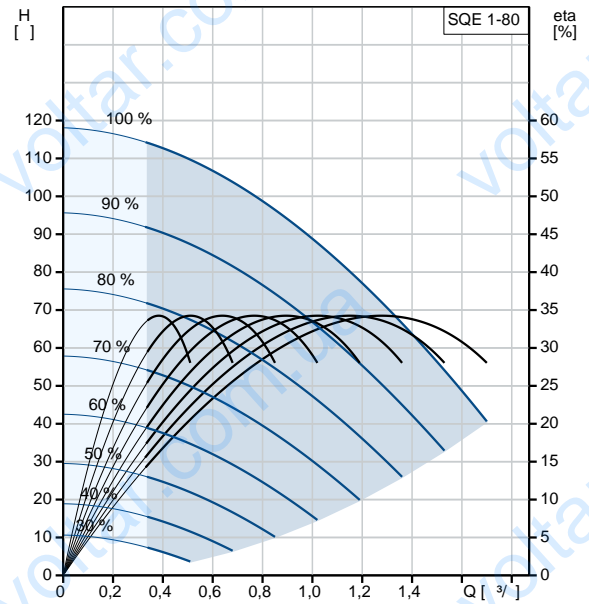
:
: Rp 1 1/4
: 76
:
: MSE3
- P1: 1.65
- P2: 1.15
: 50 Hz
: 1 x 200-240
: 8.4 A
: 1.00
: 10700 /
: (IEC 34-5): IP68
: (IEC 85): F
: 1.5
:
: 5.6
: 6.2
: 0.01 ³
Danish VVS No.: 388441480
Swedish RSK No.: 5853363
Norwegian NRF no.: 9041349



96510143 SQE 1-80 50



		SQE 1-80
		96510143
EAN		5700396502298
		10700 /
		1 ³ /
		91
		5
		CE,UL,CUL
		ISO9906:2012 3B
		96080391
		B
		Polyamide /
		DIN W.-Nr. 1.4301
		AISI 304
		DIN W.-Nr. 1.4301
		AISI 304
		Rp 1 1/4
		76
		35 °C
.t	0,15 /	35 °C
		20 °C
		998.2 / ³
		MSE3
	- P1:	1.65
	- P2:	1.15
		50 Hz
		1 x 200-240
		8.4 A
		1.00
		10700 /
	(IEC 34-5):	IP68
	(IEC 85):	F
		Y
		1.5
		96160855
CU 300/CU 301:		CU
		300/CU 301
		5.6
		6.2
		0.01 ³
		EU/S-AMREG/APRE
		G





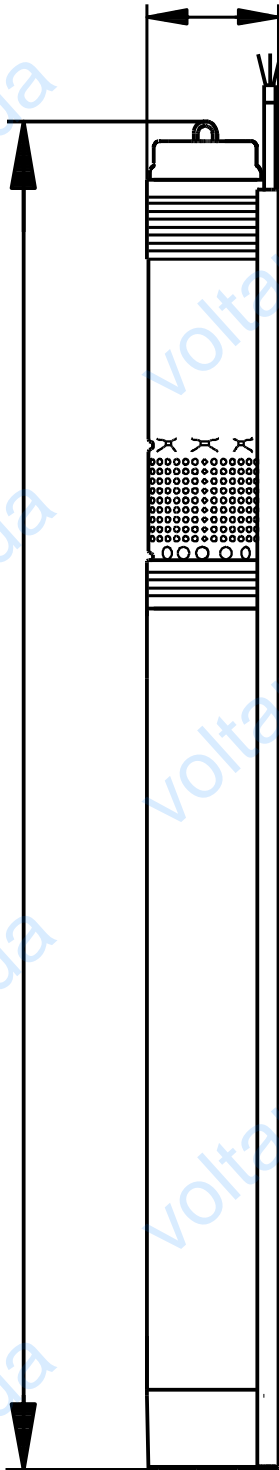
Danish VVS No.:	388441480
Swedish RSK No.:	5853363
Norwegian NRF no.:	9041349

GRUNDFOS 

96510143 SQE 1-80 50

74

825



96510143 SQE 1-80 50

