

1 **SQE 1-125**



: 96510146

3"

: 35 °C

0,15 / : 35 °C

: 20 °C

998.2 / ³

10700 /

1 ³/

135

: CE,UL,CUL

- : ISO9906:2012 3B

Polyamide /

DIN W.-Nr. 1.4301

AISI 304

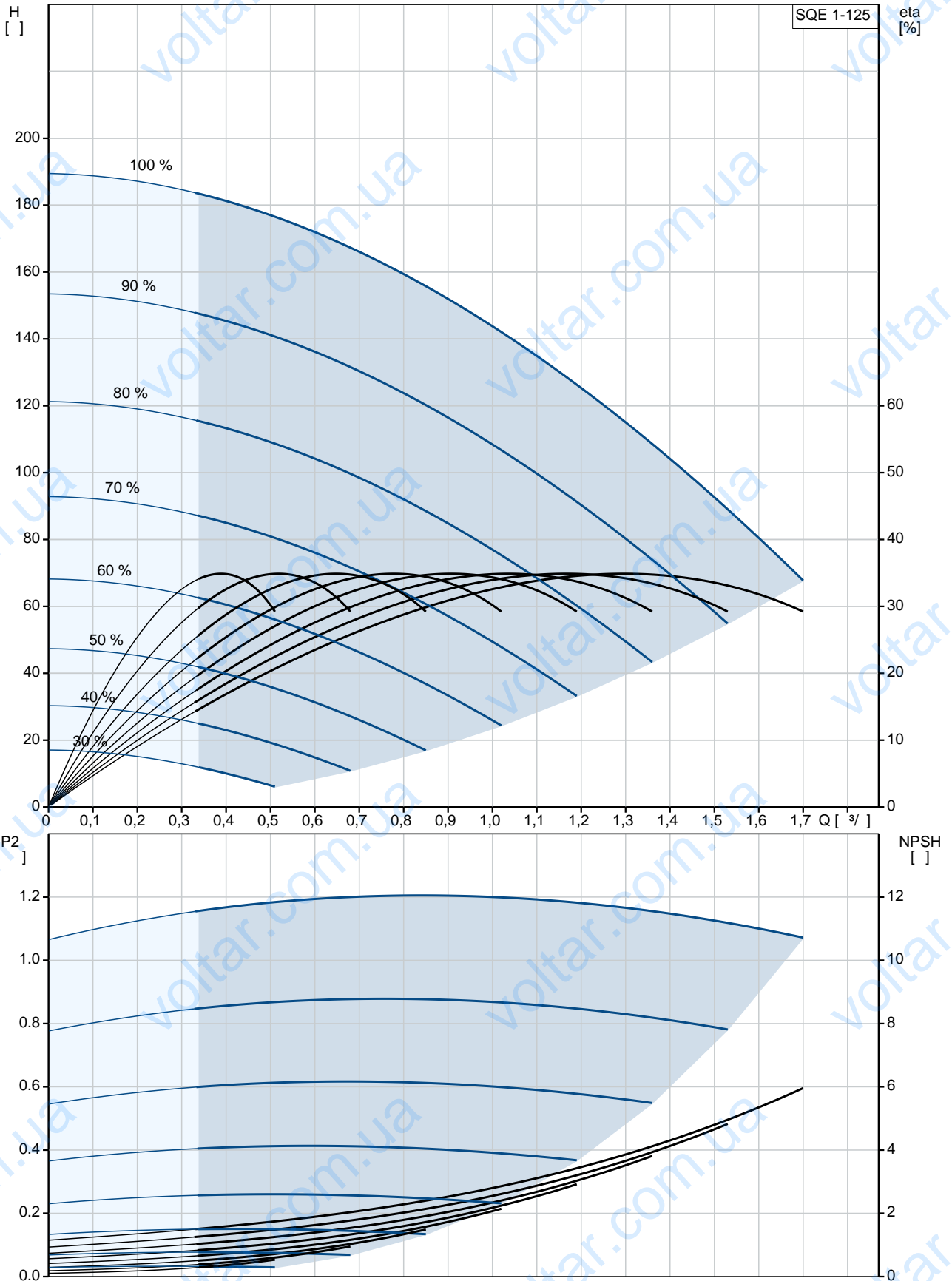
DIN W.-Nr. 1.4301

AISI 304



·
·
Rp 1 1/4
· 76
·
· MSE3
- P1: 2.32
- P2: 1.55
· 50 Hz
· 1 x 200-240
· 11.2 A
· 1.00
· 10700 /
·
(IEC 34-5): IP68
(IEC 85): F
· 1.5
·
· 6.4
· 7.1
· 0.011 ³
Danish VVS No.: 388441525
Swedish RSK No.: 5853366

96510146 SQE 1-125 50



SQE 1-125
 EAN : 96510146
 5700396502427

10700 /
 1 ³/
 135
 8
 : CE,UL,CUL
 ISO9906:2012 3B
 96080402
 B

Polyamide /
 DIN W.-Nr. 1.4301
 AISI 304

DIN W.-Nr. 1.4301
 AISI 304

Rp 1 1/4
 76

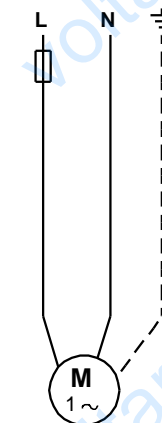
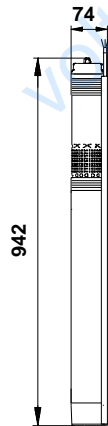
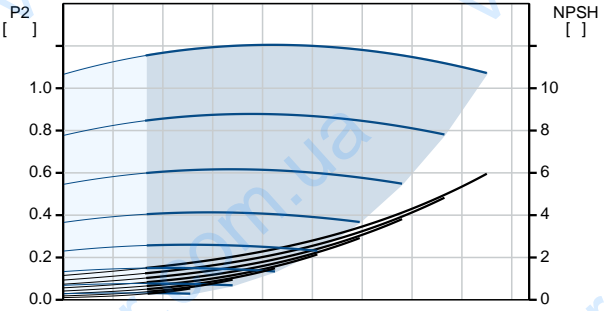
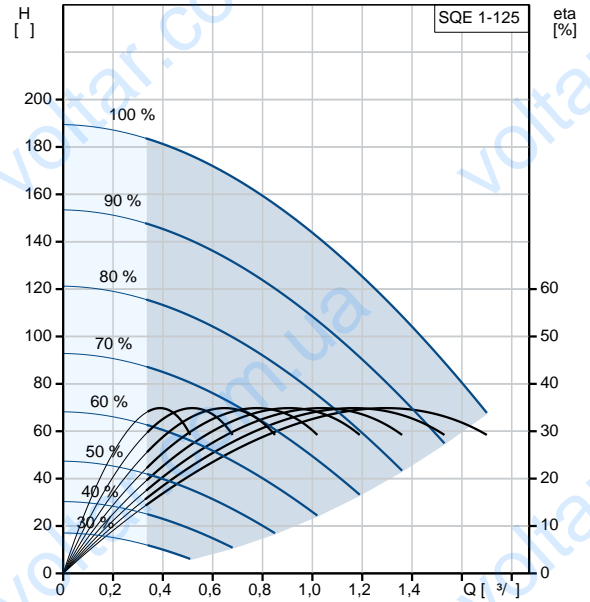
0,15 / : 35 °C
 : 35 °C
 : 20 °C
 : 998.2 / ³

MSE3
 - P1: 2.32
 - P2: 1.55
 : 50 Hz
 : 1 x 200-240
 : 11.2 A
 : 1.00
 : 10700 /

(IEC 34-5): IP68
 (IEC 85): F
 Y

1.5
 96160856

CU 300/CU 301: CU
 300/CU 301
 6.4
 7.1
 0.011 ³
 EU/S-AMREG/APRE
 G





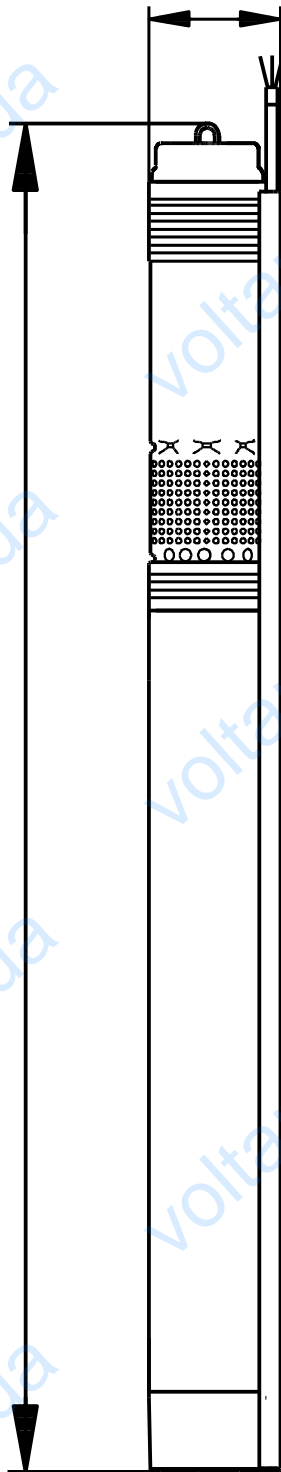
Danish VVS No.:	388441525
Swedish RSK No.:	5853366

GRUNDFOS 

96510146 SQE 1-125 50

74

942



96510146 SQE 1-125 50

