

1 **SQE 1-155**



: 96510148

3"

: 35 °C

0,15 / : 35 °C

: 20 °C

998.2 / ³

10700 /

1 ³/

151

: CE,UL,CUL

- : ISO9906:2012 3B

Polyamide /

DIN W.-Nr. 1.4301

AISI 304

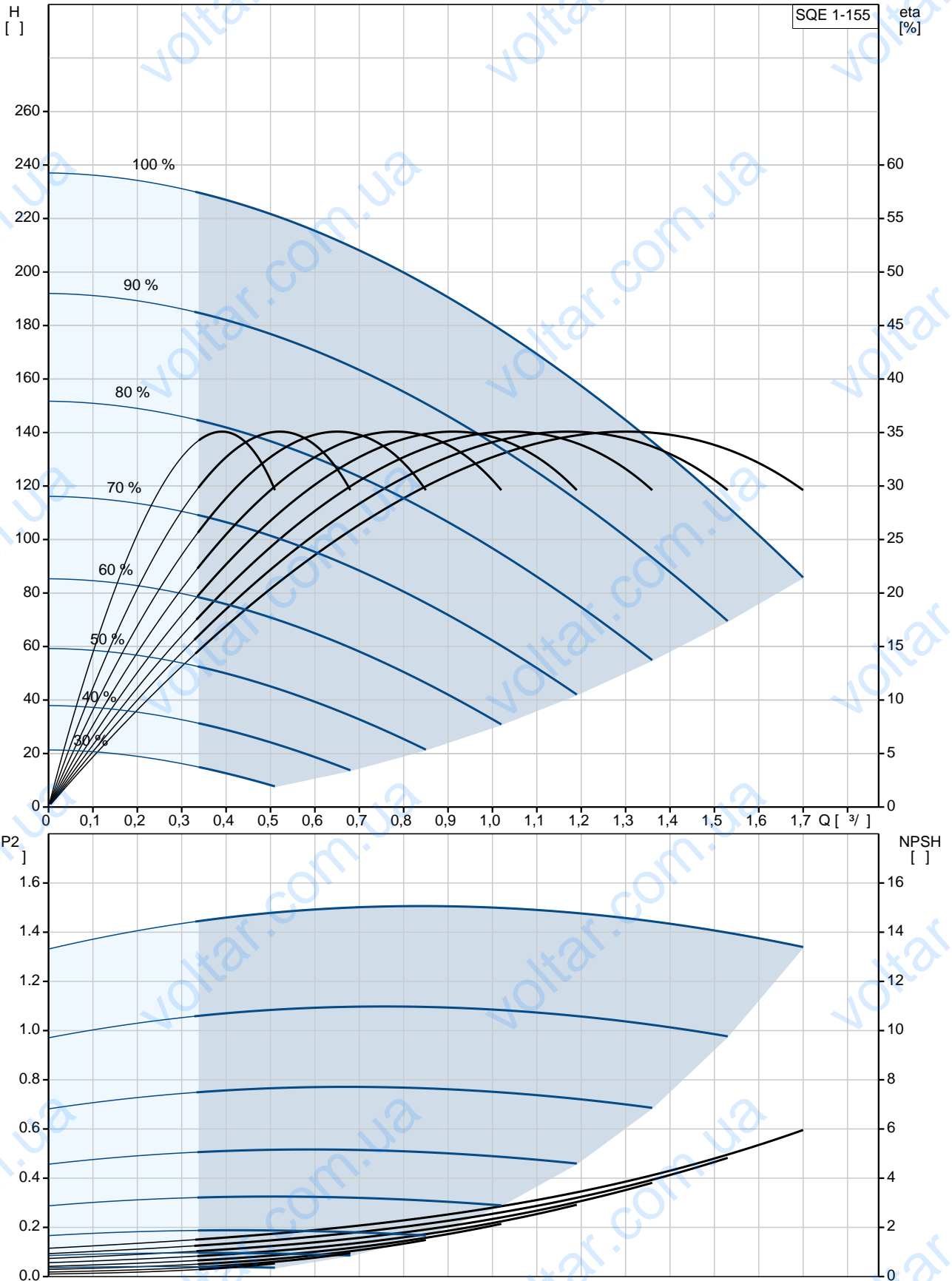
DIN W.-Nr. 1.4301

AISI 304

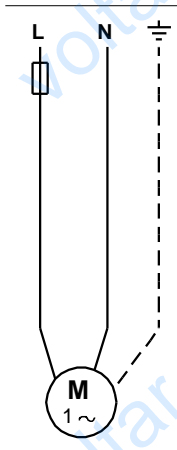
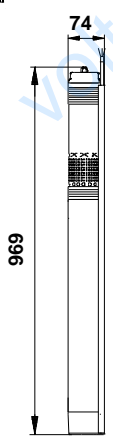
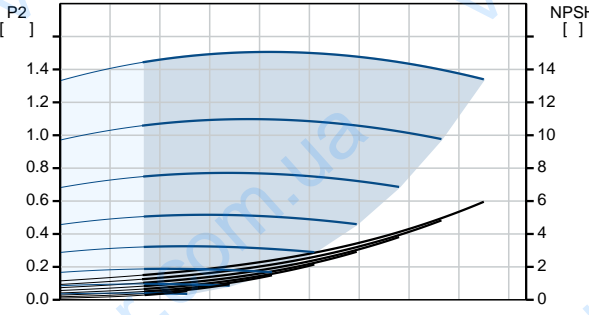
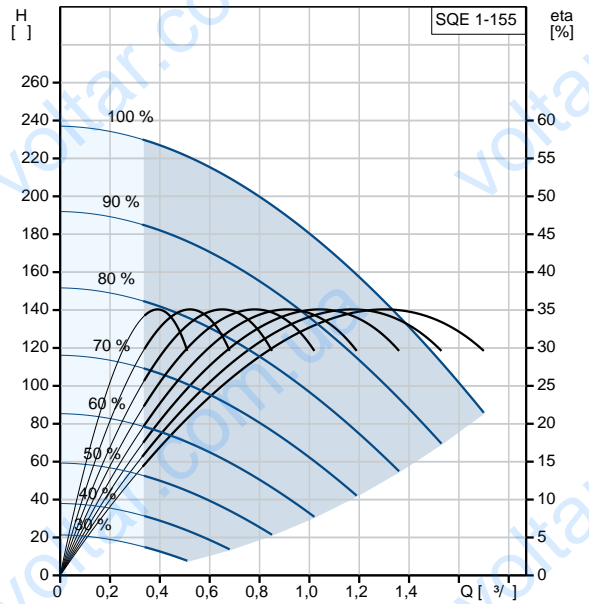


·
·
Rp 1 1/4
· 76
·
· MSE3
- P1: 2.54
- P2: 1.85
· 50 Hz
· 1 x 200-240
· 12.3 A
· 1.00
· 10700 /
·
(IEC 34-5): IP68
(IEC 85): F
· 1.5
·
· 6.7
· 7.3
·
· 0.012 ³
Danish VVS No.: 388441555
Swedish RSK No.: 5853368

96510148 SQE 1-155 50



		SQE 1-155
		96510148
EAN		5700396502441
		10700 /
		1 3/
		151
		10
		: CE,UL,CUL
		ISO9906:2012 3B
		96080404
		B
		Polyamide /
		DIN W.-Nr. 1.4301
		AISI 304
		DIN W.-Nr. 1.4301
		AISI 304
		Rp 1 1/4
		76
		35 °C
. t	0,15 /	35 °C
		20 °C
		998.2 / 3
		MSE3
	- P1:	2.54
	- P2:	1.85
		50 Hz
		1 x 200-240
		12.3 A
		1.00
		10700 /
	(IEC 34-5):	IP68
	(IEC 85):	F
		Y
		1.5
		96160857
CU 300/CU 301:		CU
		300/CU 301
		6.7
		7.3
		0.012 3
		EU/S-AMREG/APRE
		G





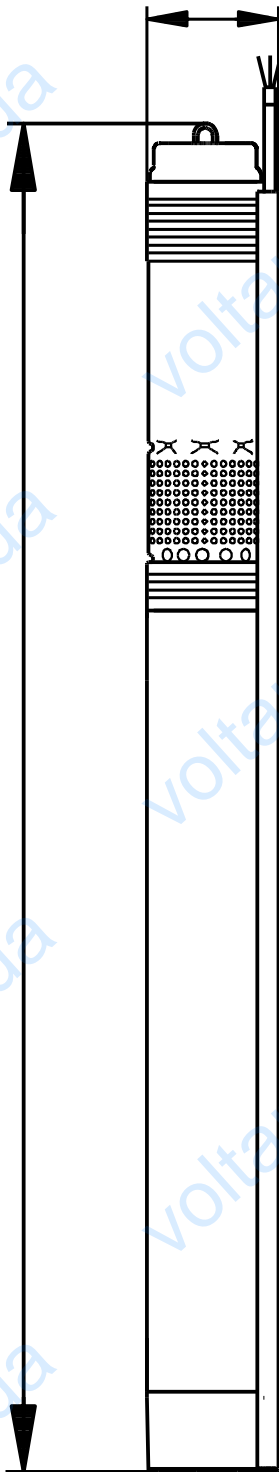
Danish VVS No.:	388441555
Swedish RSK No.:	5853368

GRUNDFOS 

96510148 SQE 1-155 50

74

969



96510148 SQE 1-155 50

