

1 **SQE 2-70**



: 96510152

3"

: 35 °C

0,15 / : 35 °C

: 20 °C

998.2 / <sup>3</sup>

10700 /

2 <sup>3</sup>/

71

: CE,UL,CUL

- : ISO9906:2012 3B

Polyamide /

DIN W.-Nr. 1.4301

AISI 304

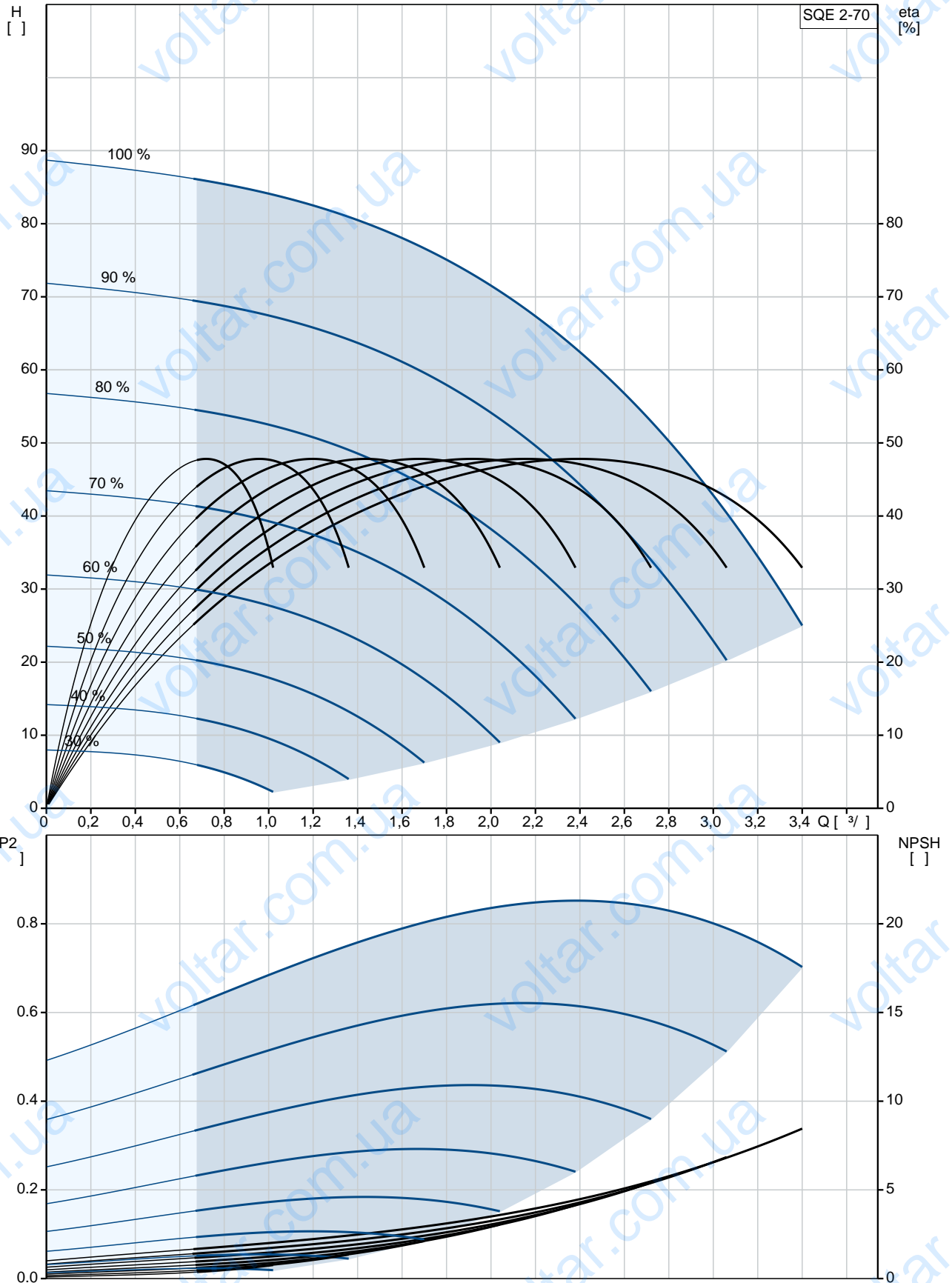
DIN W.-Nr. 1.4301

AISI 304

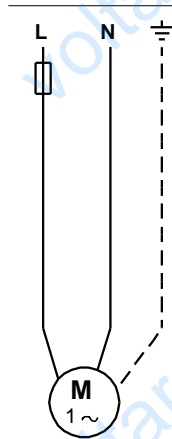
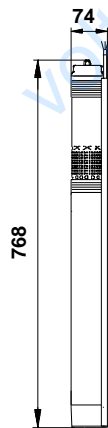
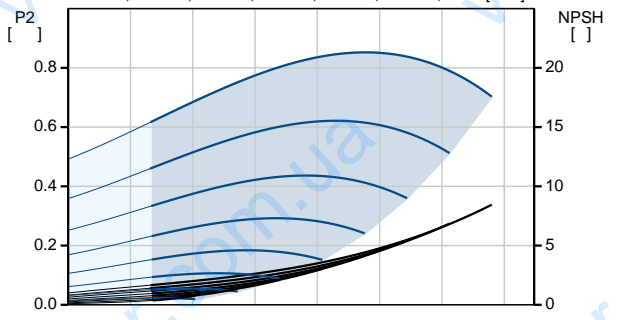
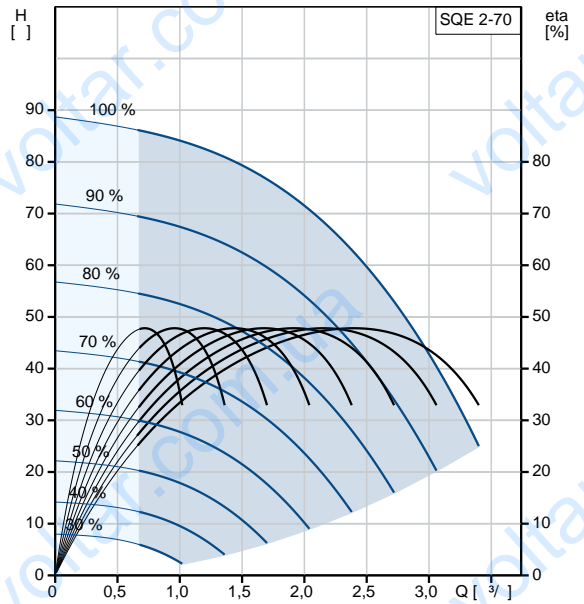


:  
: Rp 1 1/4  
: 76  
:  
: MSE3  
- P1: 1.65  
- P2: 1.15  
: 50 Hz  
: 1 x 200-240  
: 8.4 A  
: 1.00  
: 10700 /  
: (IEC 34-5): IP68  
: (IEC 85): F  
: 1.5  
:  
: 5.4  
: 6.1  
: 0.009 <sup>3</sup>  
Danish VVS No.: 388442470  
Swedish RSK No.: 5853371  
Finnish: LVI NO 4762531  
Norwegian NRF no.: 9041352

## 96510152 SQE 2-70 50



|                |        |                      |
|----------------|--------|----------------------|
|                |        | SQE 2-70             |
|                |        | 96510152             |
| EAN            | :      | 5700396502502        |
|                |        | 10700 /              |
|                |        | 2 <sup>3</sup> /     |
|                |        | 71                   |
|                |        | 4                    |
|                |        | : CE,UL,CUL          |
|                |        | ISO9906:2012 3B      |
|                |        | 96080394             |
|                |        | B                    |
|                |        |                      |
|                |        |                      |
|                |        | Polyamide /          |
|                |        | DIN W.-Nr. 1.4301    |
|                |        | AISI 304             |
|                |        |                      |
|                |        |                      |
|                |        | DIN W.-Nr. 1.4301    |
|                |        | AISI 304             |
|                |        |                      |
|                |        | Rp 1 1/4             |
|                |        | 76                   |
|                |        |                      |
|                |        |                      |
|                |        | 35 °C                |
| . t            | 0,15 / | 35 °C                |
|                |        | 20 °C                |
|                |        | 998.2 / <sup>3</sup> |
|                |        |                      |
|                |        | MSE3                 |
|                |        | - P1: 1.65           |
|                |        | - P2: 1.15           |
|                |        | 50 Hz                |
|                |        | 1 x 200-240          |
|                |        | 8.4 A                |
|                |        | 1.00                 |
|                |        | 10700 /              |
|                |        |                      |
| (IEC 34-5):    |        | IP68                 |
| (IEC 85):      |        | F                    |
|                |        | Y                    |
|                |        |                      |
|                |        | 1.5                  |
|                |        | 96160855             |
|                |        |                      |
| CU 300/CU 301: |        | CU                   |
|                |        | 300/CU 301           |
|                |        | 5.4                  |
|                |        | 6.1                  |
|                |        | 0.009 <sup>3</sup>   |
|                |        |                      |
|                |        | EU/S-AMREG/APRE      |
|                |        | G                    |





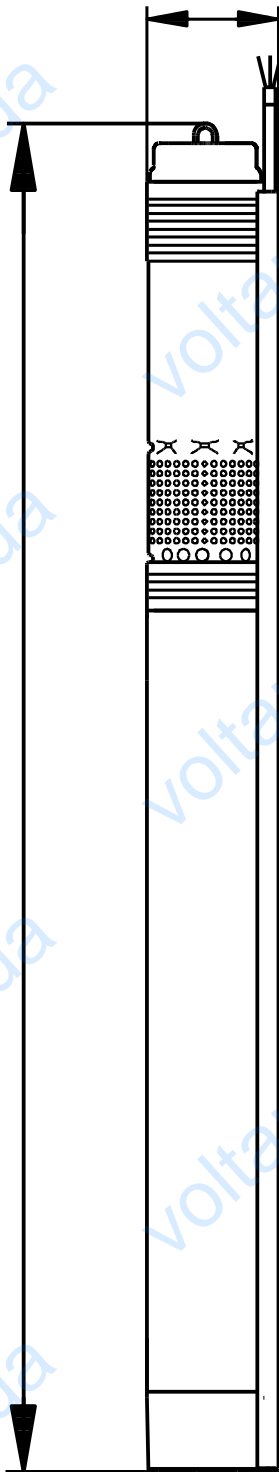
|                    |                |
|--------------------|----------------|
| Danish VVS No.:    | 388442470      |
| Swedish RSK No.:   | 5853371        |
| Finnish:           | LVI NO 4762531 |
| Norwegian NRF no.: | 9041352        |

**GRUNDFOS** 

96510152 SQE 2-70 50

74

768



96510152 SQE 2-70 50

