

1 **SQE 2-115**



: 96510155

3"

: 35 °C

0,15 / : 35 °C

: 20 °C

998.2 / ³

10700 /

2 ³/

128

: CE,UL,CUL

- : ISO9906:2012 3B

Polyamide /

DIN W.-Nr. 1.4301

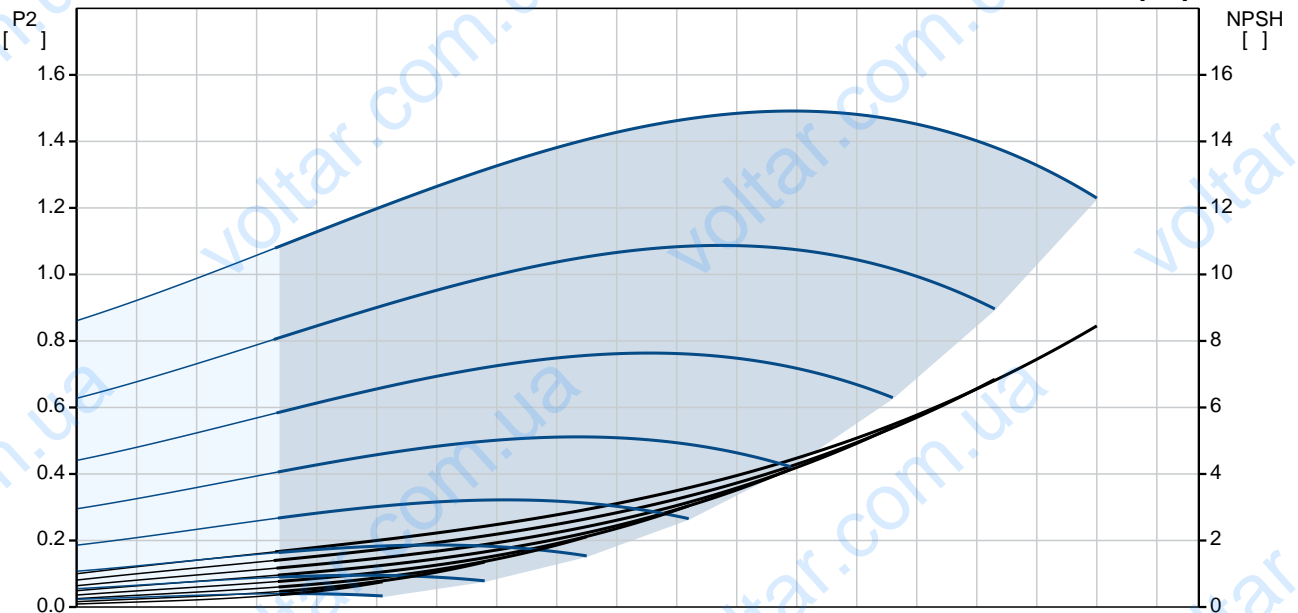
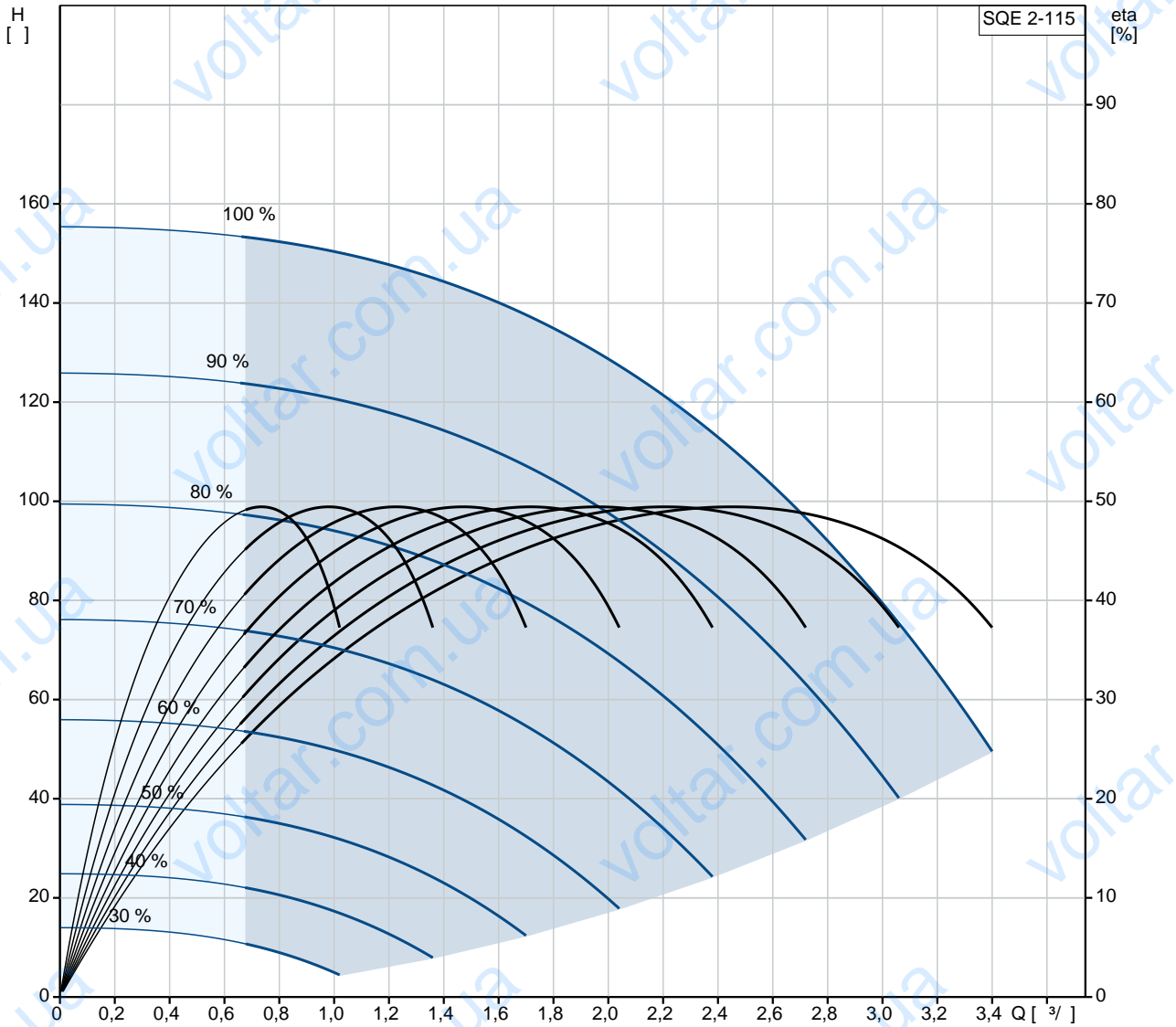
AISI 304

DIN W.-Nr. 1.4301

AISI 304

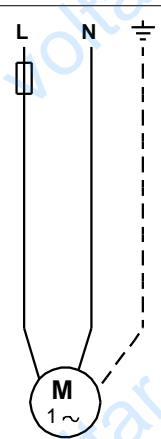
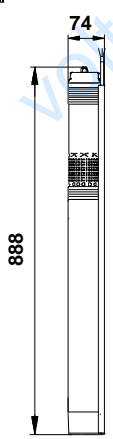
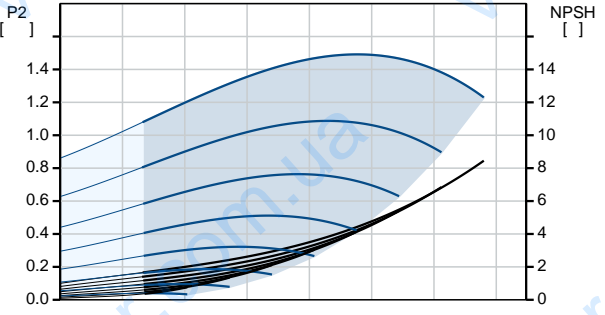
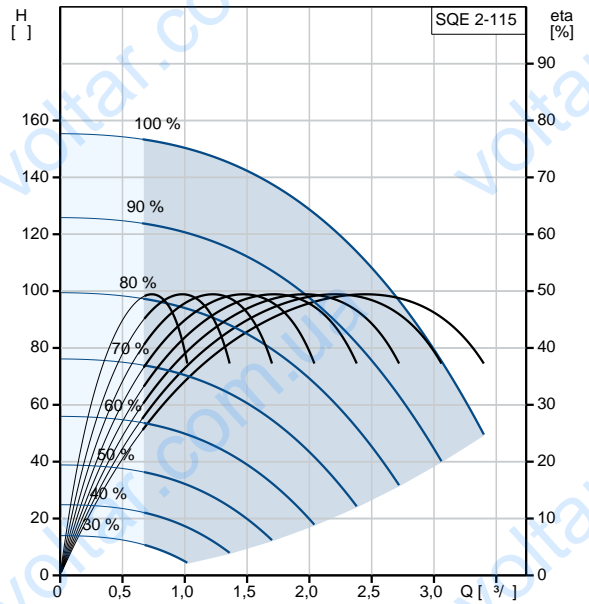
:
: Rp 1 1/4
: 76
:
: MSE3
- P1: 2.54
- P2: 1.85
: 50 Hz
: 1 x 200-240
: 12.3 A
: 1.00
: 10700 /
: (IEC 34-5): IP68
: (IEC 85): F
: 1.5
:
: 6.3
: 6.9
: 0.011 ³
Danish VVS No.: 388442515
Swedish RSK No.: 5853374
Finnish: LVI NO 4762534

96510155 SQE 2-115 50



GRUNDFOS

		SQE 2-115
		96510155
EAN		5700396502533
		10700 /
		2 3/
		128
		7
		: CE,UL,CUL
		ISO9906:2012 3B
		96080406
		B
		Polyamide /
		DIN W.-Nr. 1.4301
		AISI 304
		DIN W.-Nr. 1.4301
		AISI 304
		Rp 1 1/4
		76
		35 °C
. t	0,15 /	35 °C
		20 °C
		998.2 / 3
		MSE3
	- P1:	2.54
	- P2:	1.85
		50 Hz
		1 x 200-240
		12.3 A
		1.00
		10700 /
	(IEC 34-5):	IP68
	(IEC 85):	F
		Y
		1.5
		96160857
CU 300/CU 301:		CU
		300/CU 301
		6.3
		6.9
		0.011 3
		EU/S-AMREG/APRE
		G





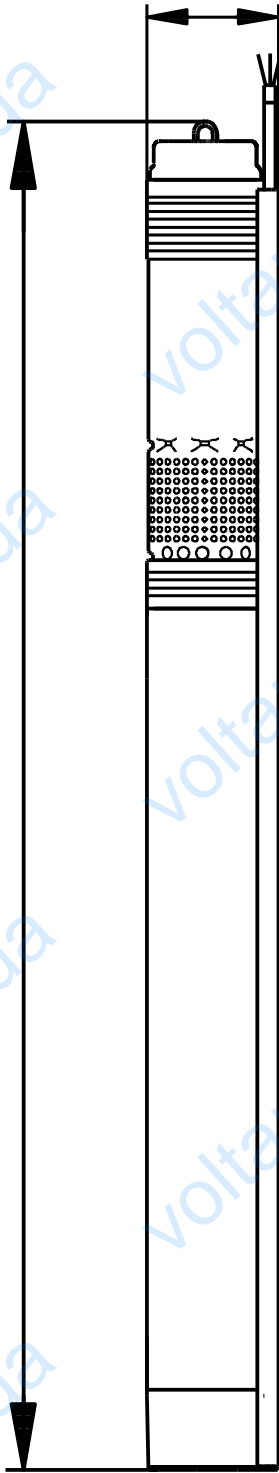
Danish VVS No.:	388442515
Swedish RSK No.:	5853374
Finnish:	LVI NO 4762534

GRUNDFOS 

96510155 SQE 2-115 50

74

888



96510155 SQE 2-115 50

