

1 **SQE 3-80**



: 96510160

3"

: 35 °C

0,15 / : 35 °C

: 20 °C

998.2 / ³

10700 /

3 ^{3/}

84

: CE,UL,CUL

- : ISO9906:2012 3B

Polyamide /

DIN W.-Nr. 1.4301

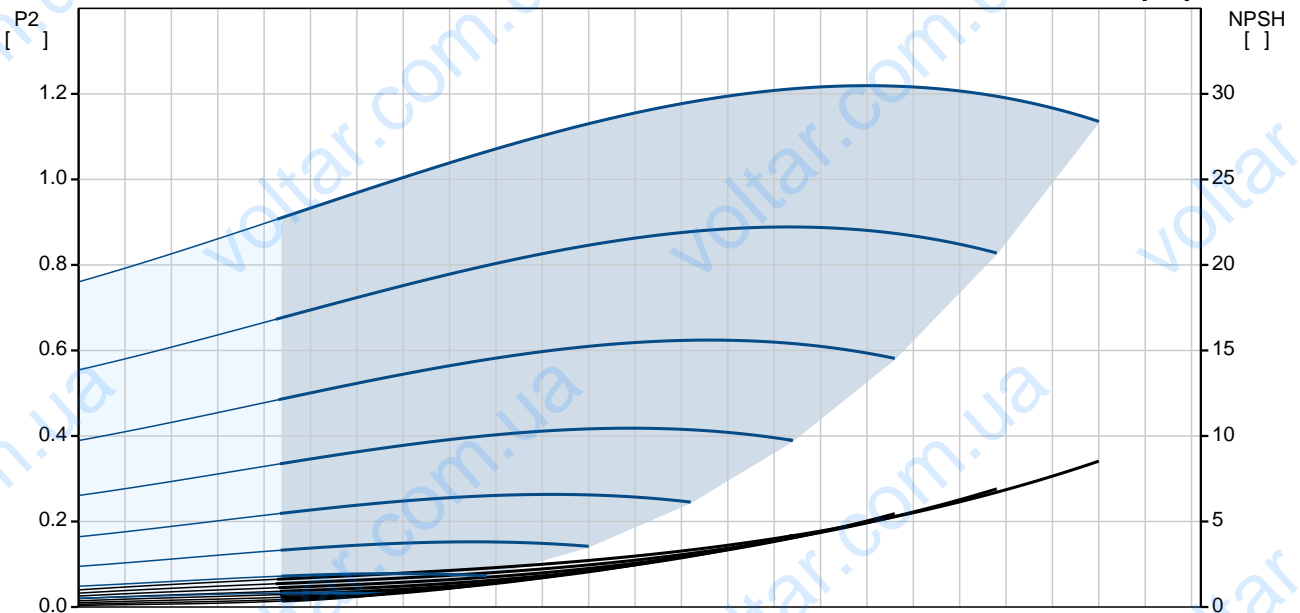
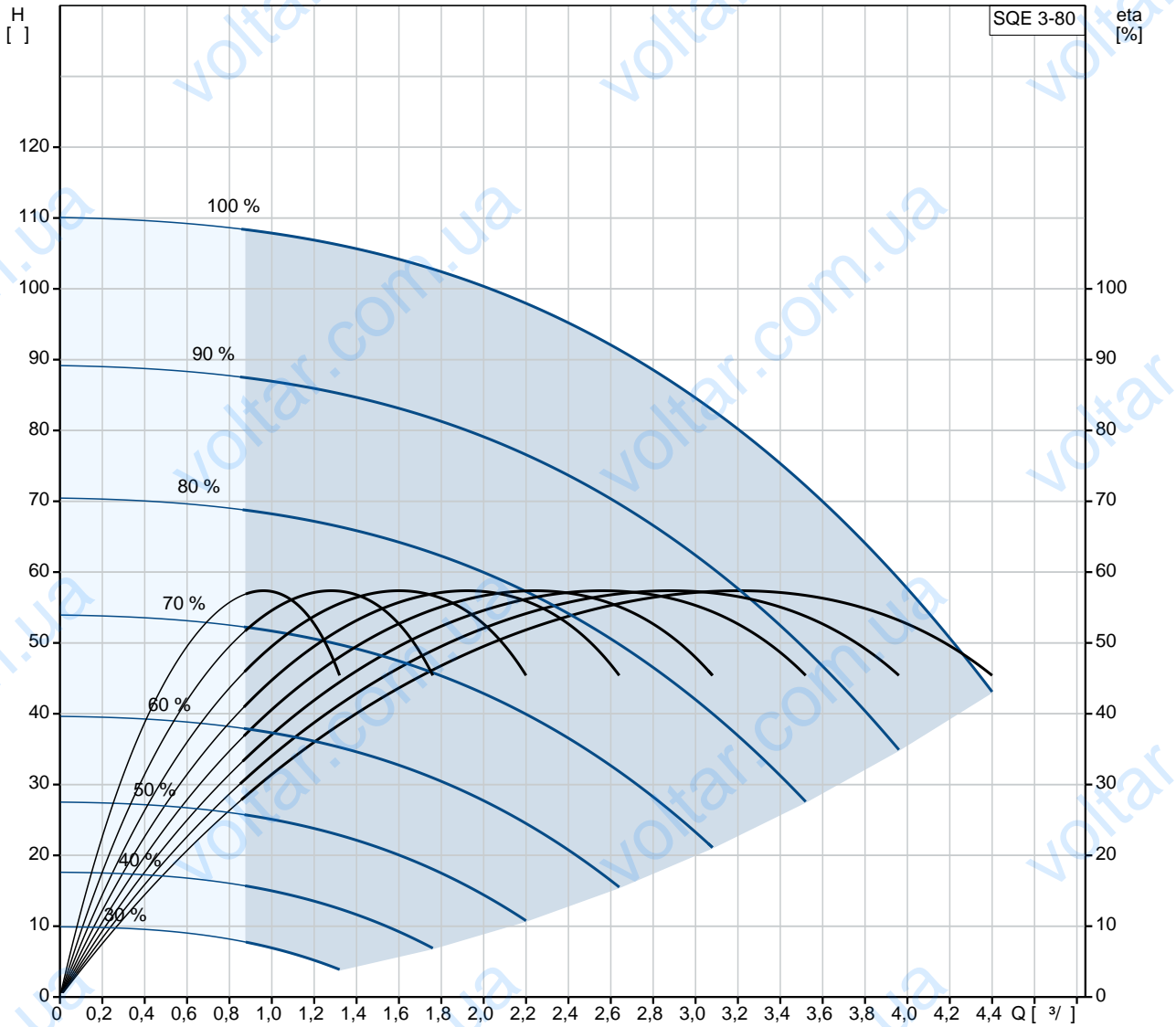
AISI 304

DIN W.-Nr. 1.4301

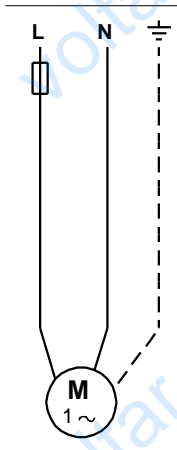
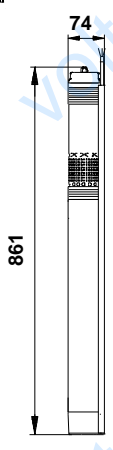
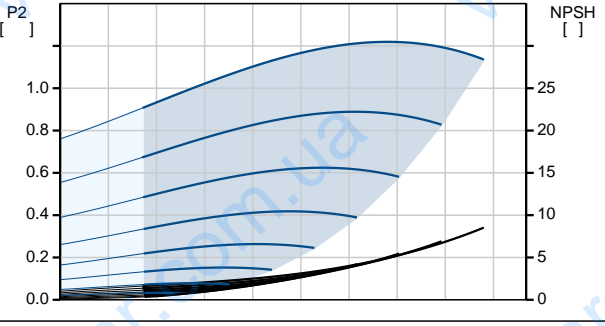
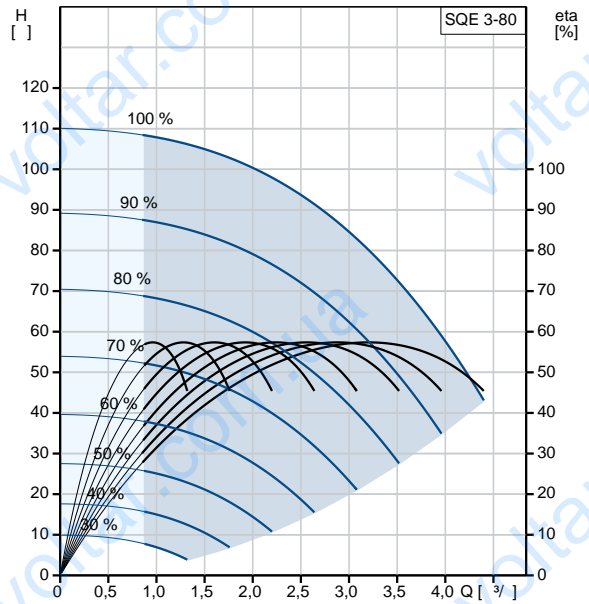
AISI 304

·
·
Rp 1 1/4
· 76
·
· MSE3
- P1: 2.32
- P2: 1.55
· 50 Hz
· 1 x 200-240
· 11.2 A
· 1.00
· 10700 /
·
(IEC 34-5): IP68
(IEC 85): F
· 1.5
·
· 6.3
· 6.8
· 0.01 ³
Danish VVS No.: 388443480
Swedish RSK No.: 5853379
Norwegian NRF no.: 9041356

96510160 SQE 3-80 50



		SQE 3-80
		96510160
EAN		5700396502588
		10700 /
		3 ³ /
		84
		6
		: CE,UL,CUL
		ISO9906:2012 3B
		96080408
		B
		Polyamide /
		DIN W.-Nr. 1.4301
		AISI 304
		DIN W.-Nr. 1.4301
		AISI 304
		Rp 1 1/4
		76
		35 °C
. t	0,15 /	35 °C
		20 °C
		998.2 / ³
		MSE3
	- P1:	2.32
	- P2:	1.55
		50 Hz
		1 x 200-240
		11.2 A
		1.00
		10700 /
	(IEC 34-5):	IP68
	(IEC 85):	F
		Y
		1.5
		96160856
CU 300/CU 301:		CU
		300/CU 301
		6.3
		6.8
		0.01 ³
		EU/S-AMREG/APRE
		G





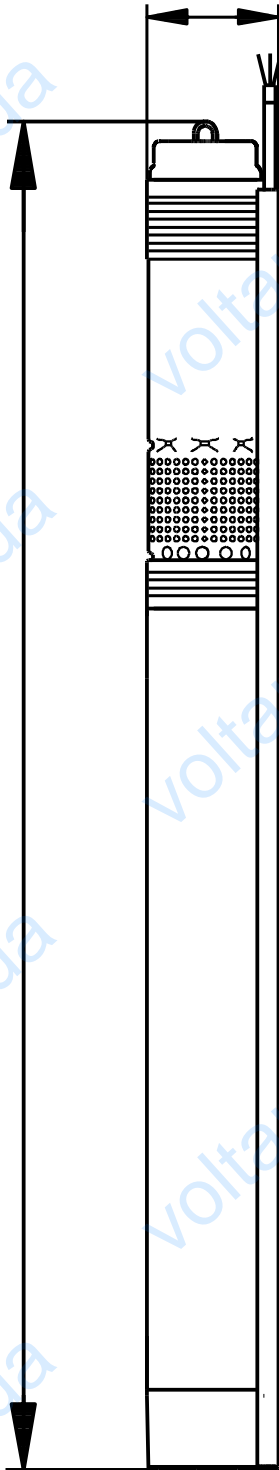
Danish VVS No.:	388443480
Swedish RSK No.:	5853379
Norwegian NRF no.:	9041356

GRUNDFOS 

96510160 SQE 3-80 50

74

861



96510160 SQE 3-80 50

