

1 **SQE 3-95**



: 96510161

3"

: 35 °C

0,15 / : 35 °C

: 20 °C

998.2 / ³

10700 /

3 ^{3/}

98

: CE,UL,CUL

- : ISO9906:2012 3B

Polyamide /

DIN W.-Nr. 1.4301

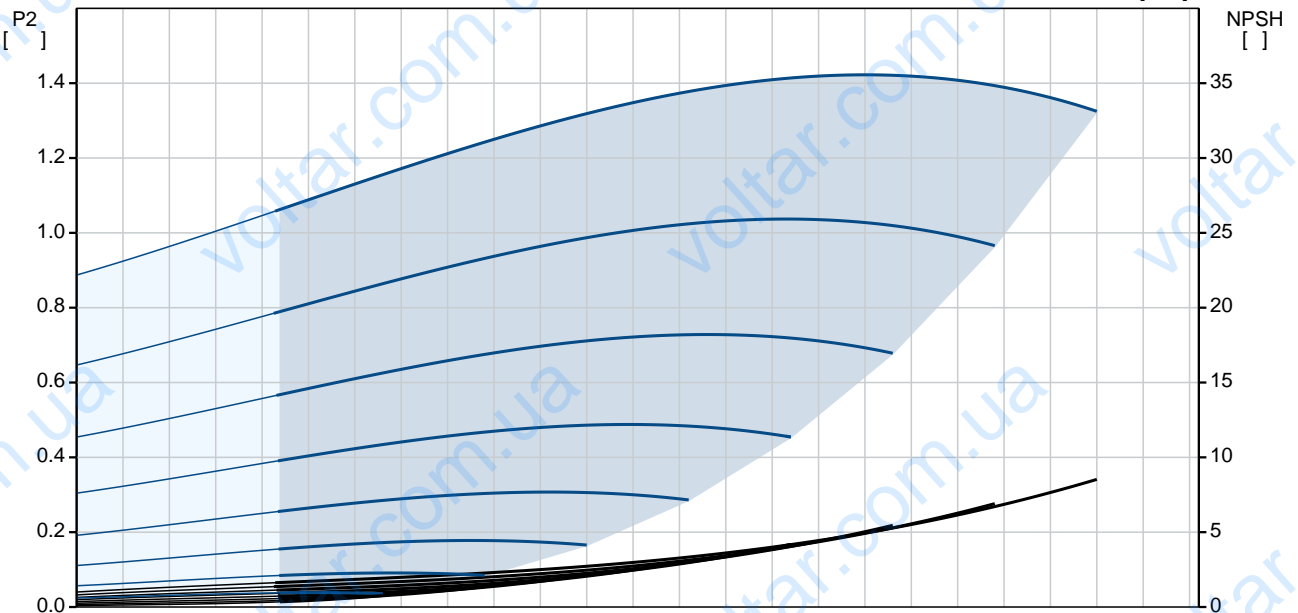
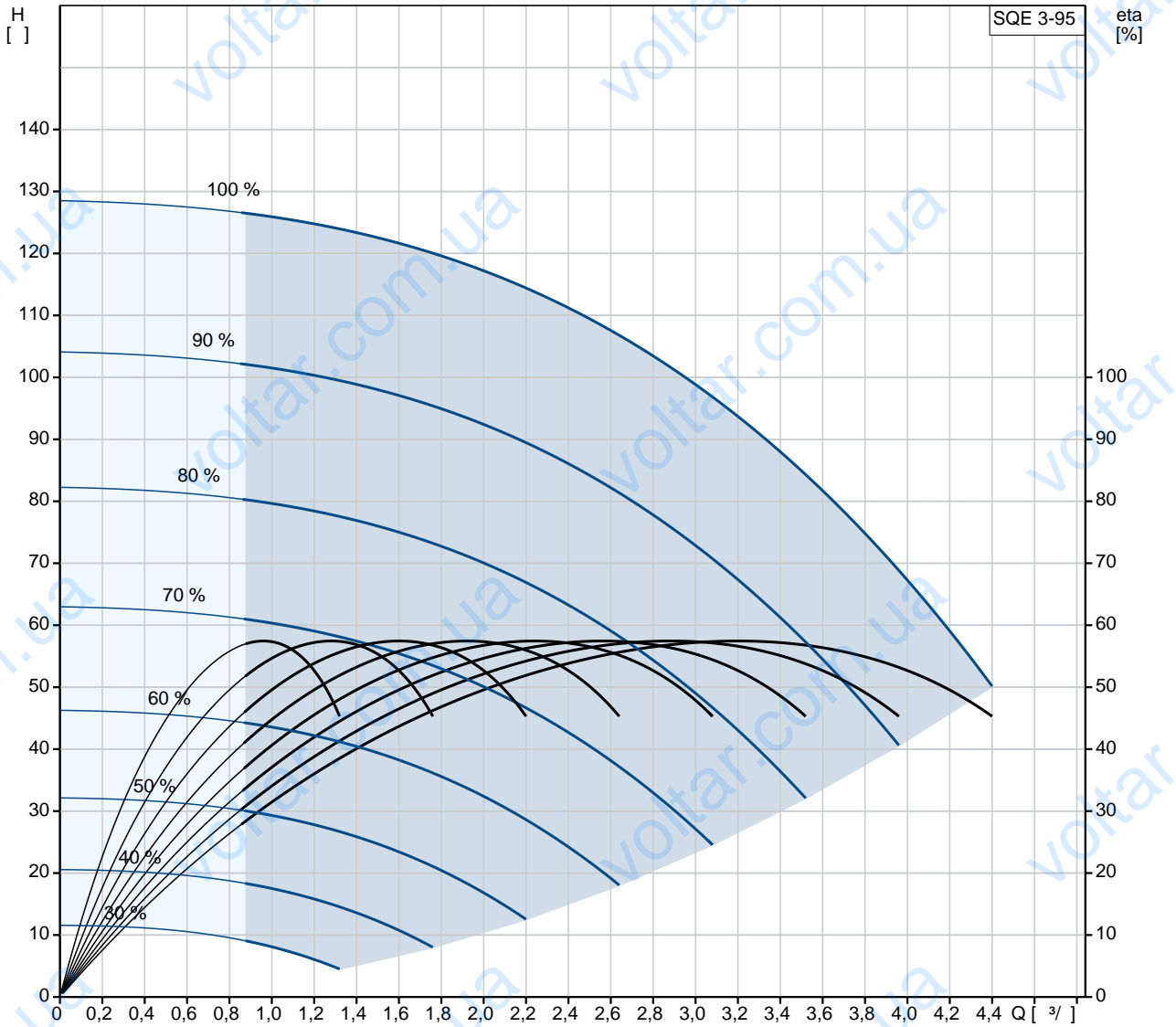
AISI 304

DIN W.-Nr. 1.4301

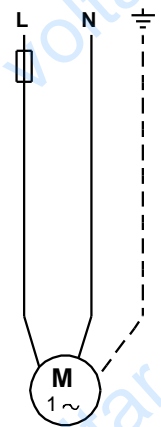
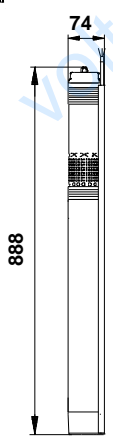
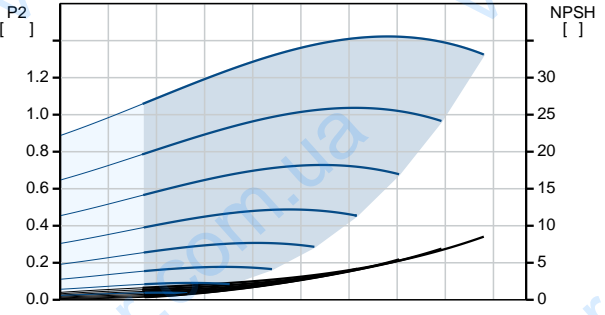
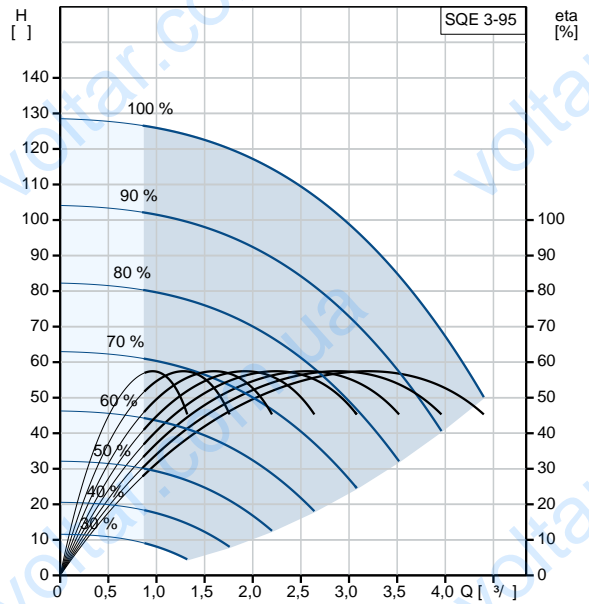
AISI 304

·
·
Rp 1 1/4
· 76
·
· MSE3
- P1: 2.32
- P2: 1.55
· 50 Hz
· 1 x 200-240
· 11.2 A
· 1.00
· 10700 /
·
(IEC 34-5): IP68
(IEC 85): F
· 1.5
·
· 6.4
· 6.9
·
· 0.011 ³
Danish VVS No.: 388443495
Swedish RSK No.: 5853380

96510161 SQE 3-95 50



			SQE 3-95
			96510161
EAN	:		5700396502595
			10700 /
			3 ³ /
			98
			7
			: CE,UL,CUL
			ISO9906:2012 3B
			96080409
			B
			Polyamide /
			DIN W.-Nr. 1.4301
			AISI 304
			DIN W.-Nr. 1.4301
			AISI 304
			Rp 1 1/4
			76
			35 °C
. t	0,15 /		35 °C
			20 °C
			998.2 / ³
			MSE3
		- P1:	2.32
		- P2:	1.55
			50 Hz
			1 x 200-240
			11.2 A
			1.00
			10700 /
		(IEC 34-5):	IP68
		(IEC 85):	F
			Y
			1.5
			96160856
CU 300/CU 301:			CU
			300/CU 301
			6.4
			6.9
			0.011 ³
			EU/S-AMREG/APRE
			G





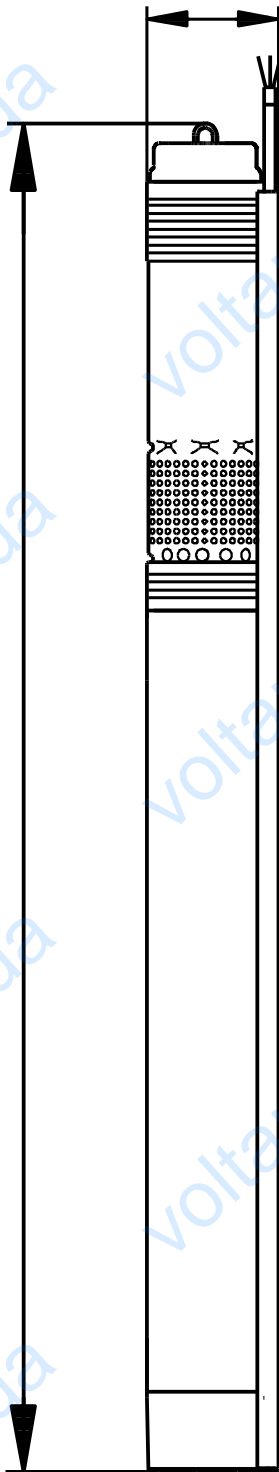
Danish VVS No.:	388443495
Swedish RSK No.:	5853380

GRUNDFOS 

96510161 SQE 3-95 50

74

888



96510161 SQE 3-95 50

