

1 **SQE 5-15**



: 96510163

3"

: 35 °C

0,15 / : 35 °C

: 20 °C

998.2 / <sup>3</sup>

10700 /

5 <sup>3/</sup>

11

: CE,UL,CUL

- : ISO9906:2012 3B

Polyamide /

DIN W.-Nr. 1.4301

AISI 304

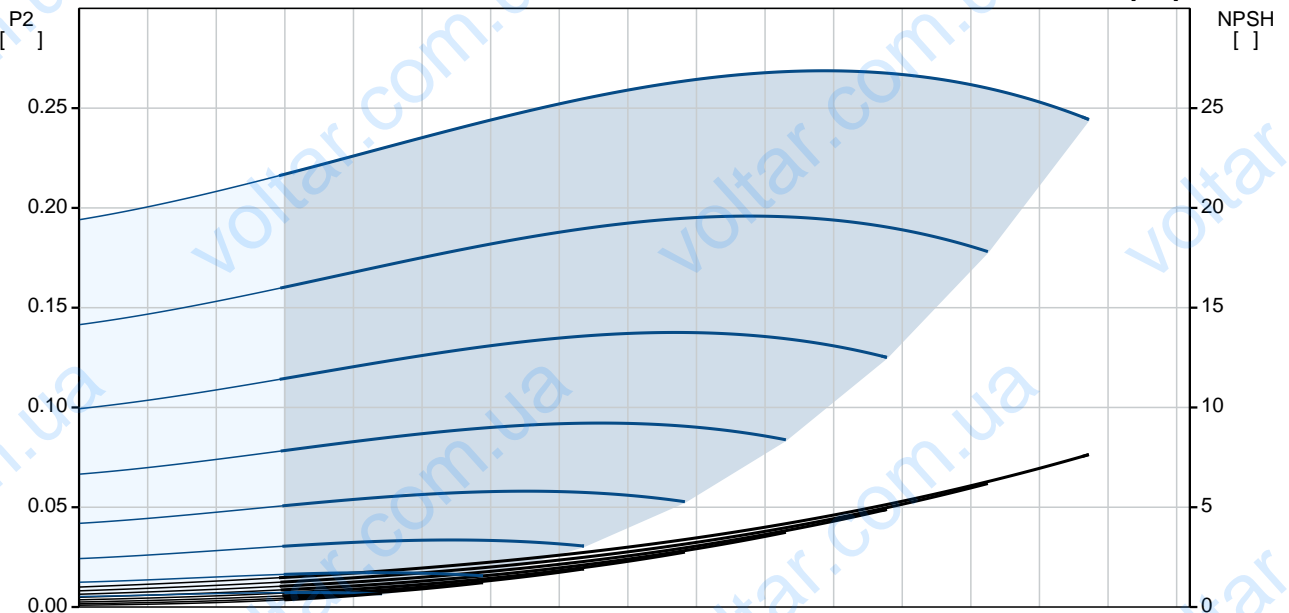
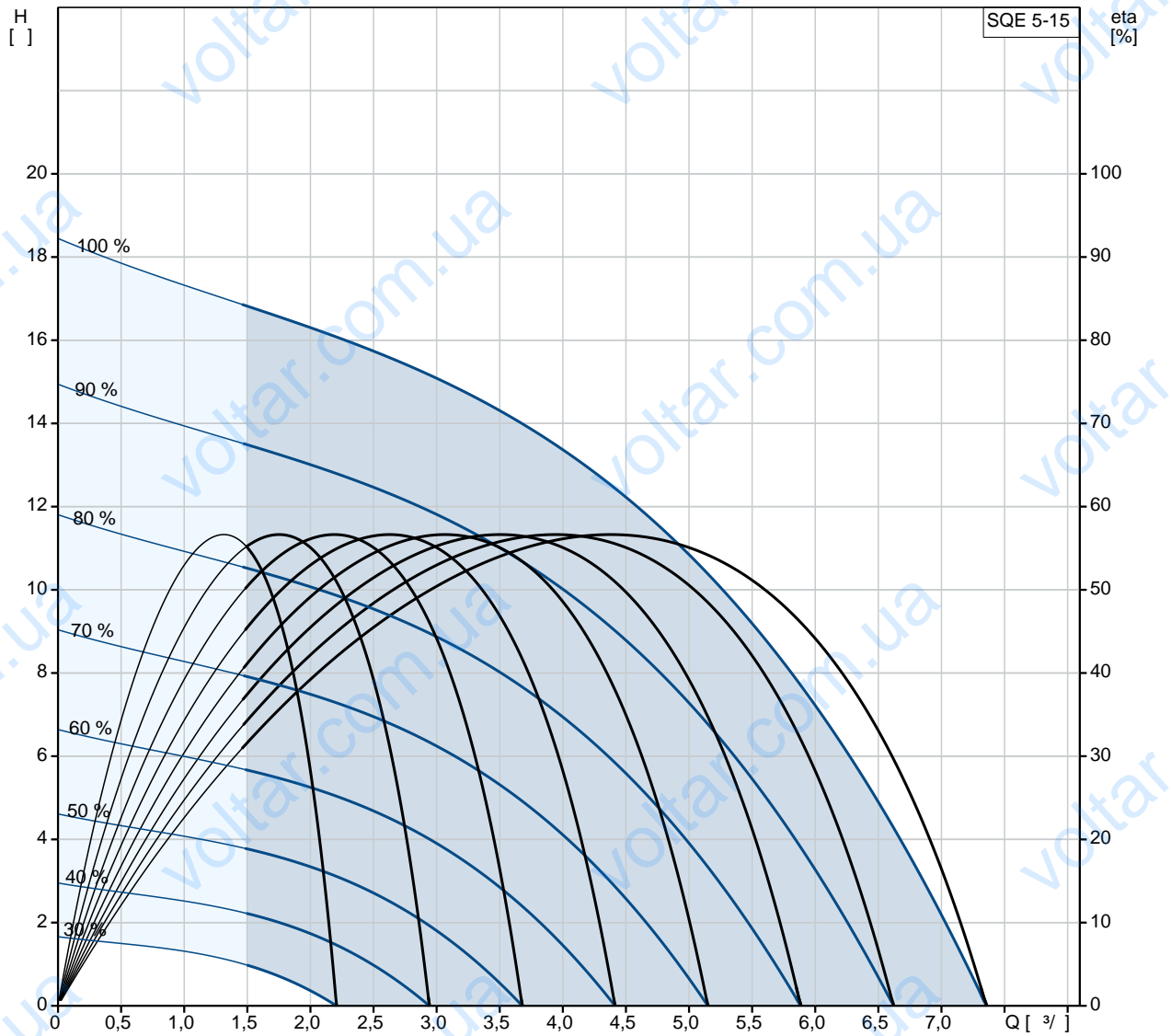
DIN W.-Nr. 1.4301

AISI 304

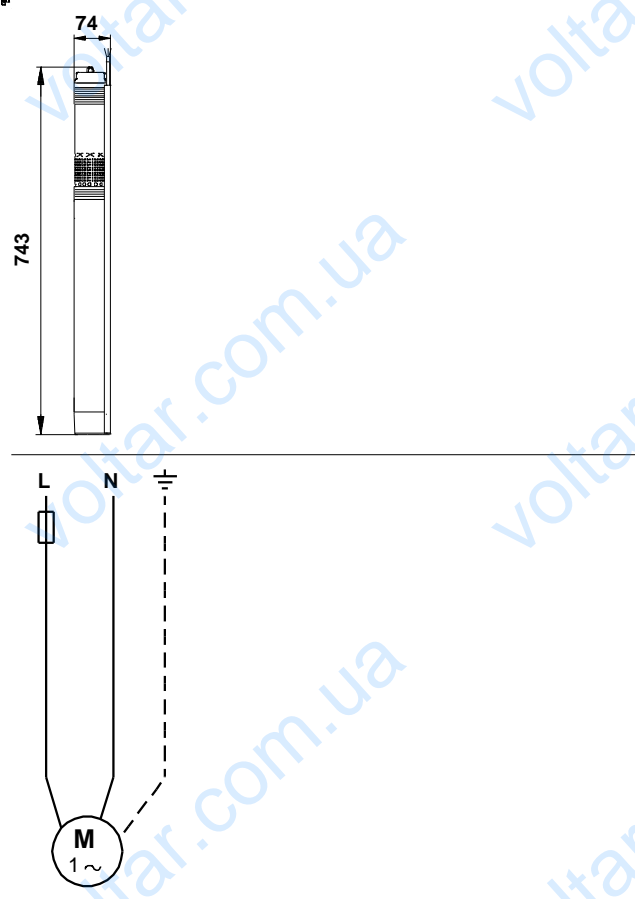
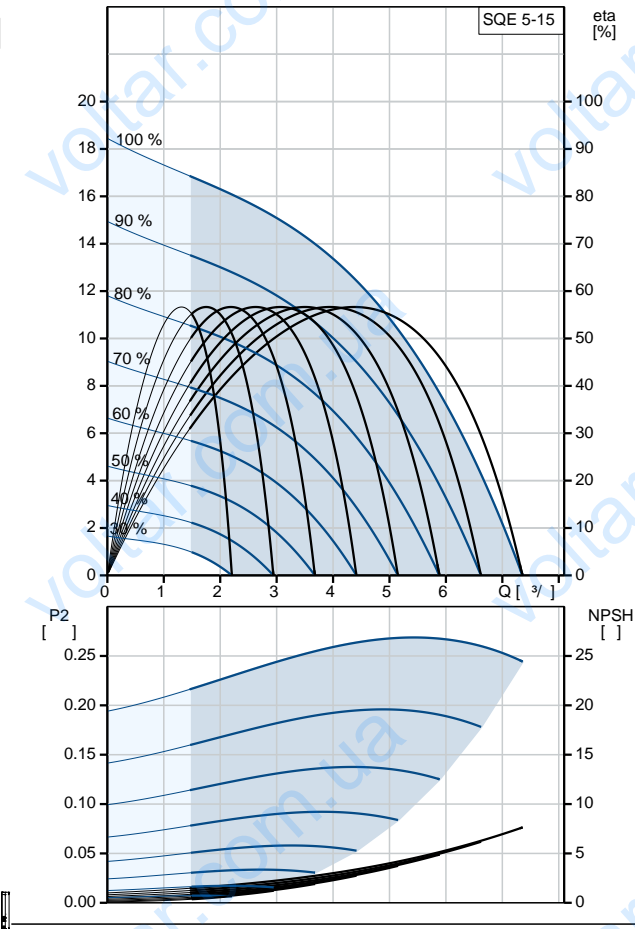


·  
·  
Rp 1 1/2  
· 76  
·  
· MSE3  
- P1: 1.02  
- P2: 0.7  
· 50 Hz  
· 1 x 200-240  
· 5.2 A  
· 1.00  
· 10700 /  
·  
(IEC 34-5): IP68  
(IEC 85): F  
· 1.5  
·  
· 4.7  
· 5.4  
·  
· 0.009 <sup>3</sup>  
Danish VVS No.: 388445415  
Swedish RSK No.: 5853382

## 96510163 SQE 5-15 50



			SQE 5-15
			96510163
EAN	:		5700396502717
			10700 /
			5 <sup>3</sup> /
			11
			1
			: CE,UL,CUL
			ISO9906:2012 3B
			96080388
			B
			Polyamide /
			DIN W.-Nr. 1.4301
			AISI 304
			DIN W.-Nr. 1.4301
			AISI 304
			Rp 1 1/2
			76
			35 °C
. t	0,15 /		35 °C
			20 °C
			998.2 / <sup>3</sup>
			MSE3
		- P1:	1.02
		- P2:	0.7
			50 Hz
			1 x 200-240
			5.2 A
			1.00
			10700 /
		(IEC 34-5):	IP68
		(IEC 85):	F
			Y
			1.5
			96160854
CU 300/CU 301:			CU
			300/CU 301
			4.7
			5.4
			0.009 <sup>3</sup>
			EU/S-AMREG/APRE
			G





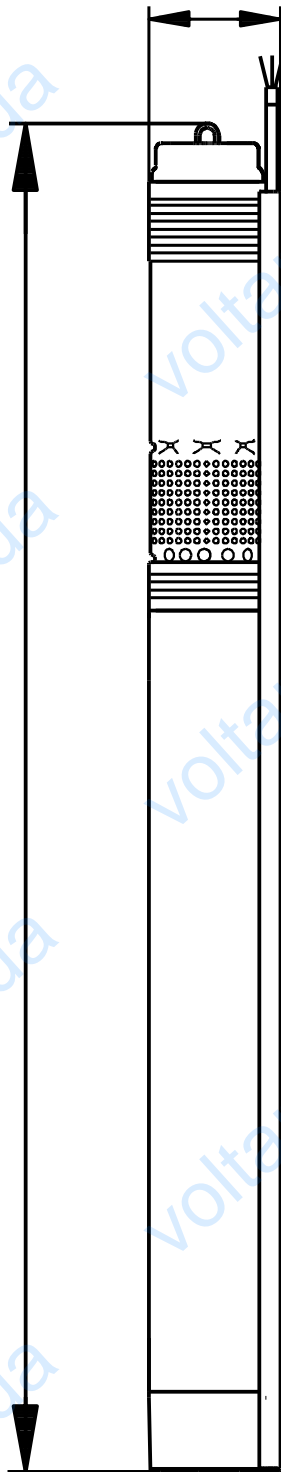
Danish VVS No.:	388445415
Swedish RSK No.:	5853382

**GRUNDFOS** 

96510163 SQE 5-15 50

74

743



96510163 SQE 5-15 50

