

1 UPS 25-70 180



96621354

PES/PP.

1-

: 2.. 95 °C
 60 °C
 983.2 / 3

TF

95
 : AAA

EN-JL1030
 ASTM 30 B
 , PES/PP

10
 G 1 1/2
 PN 10
 180

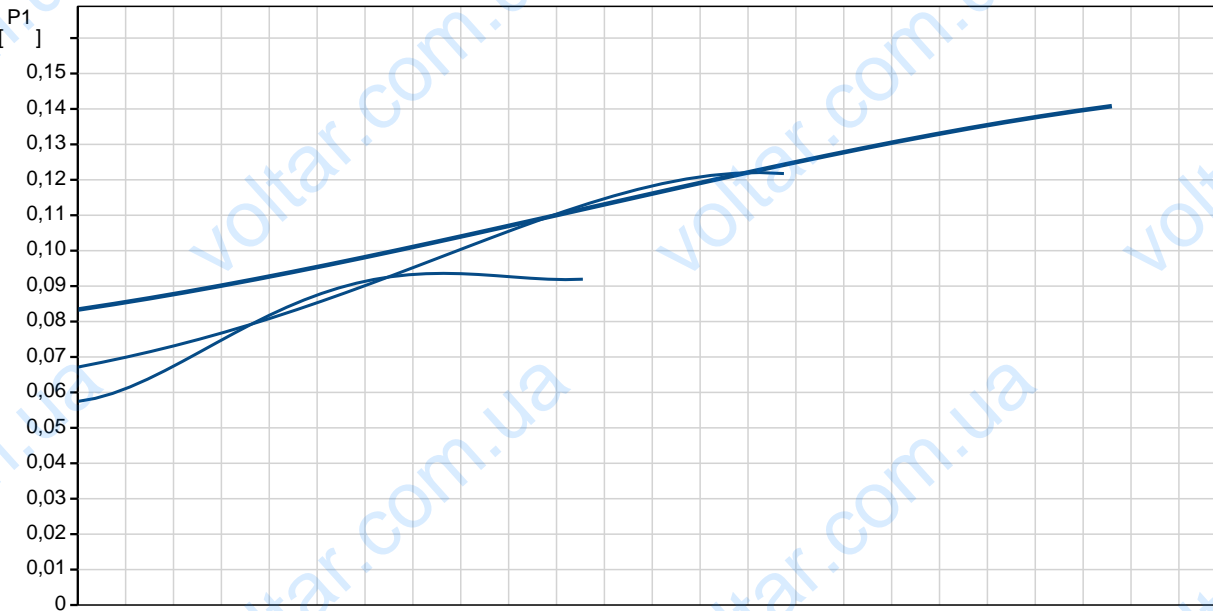
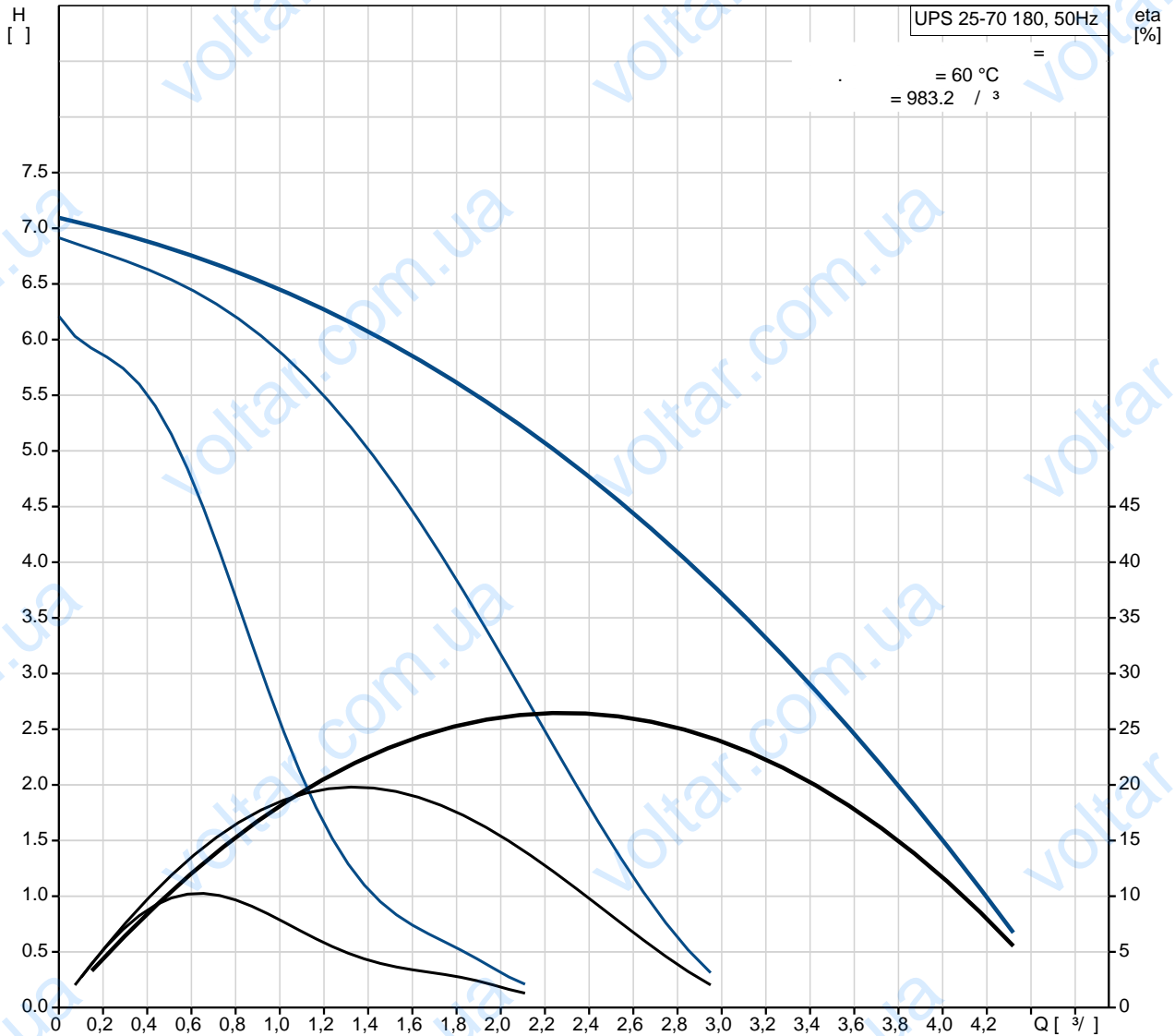
C

2.5

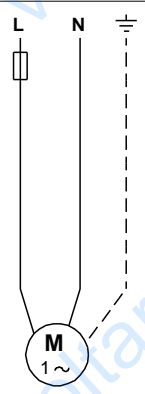
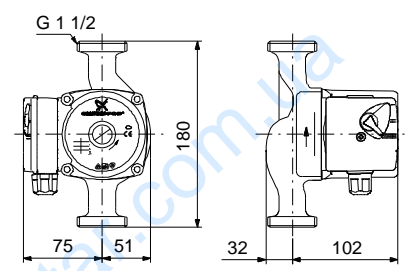
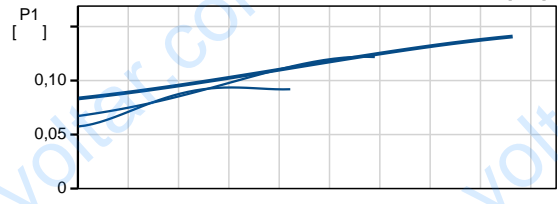
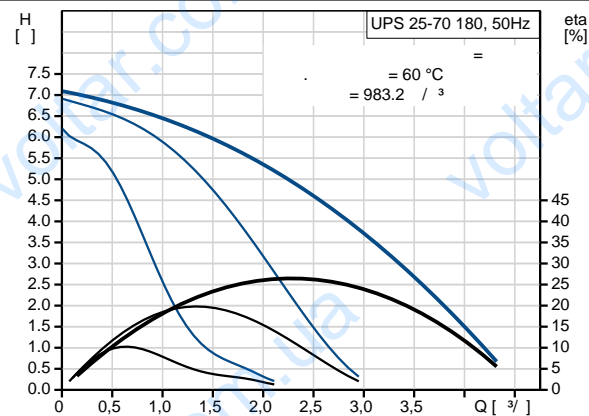
1: 95
 2: 125

	:	149
	:	50 Hz
	:	1 x 230 V
1:	:	0.46 A
2:	:	0.58 A
3:	:	0.65 A
-	:	2.5
(IEC 34-5):	:	IP44
(IEC 85):	:	H
:	:	
:	:	2.4
:	:	2.6
:	:	0.004 ³

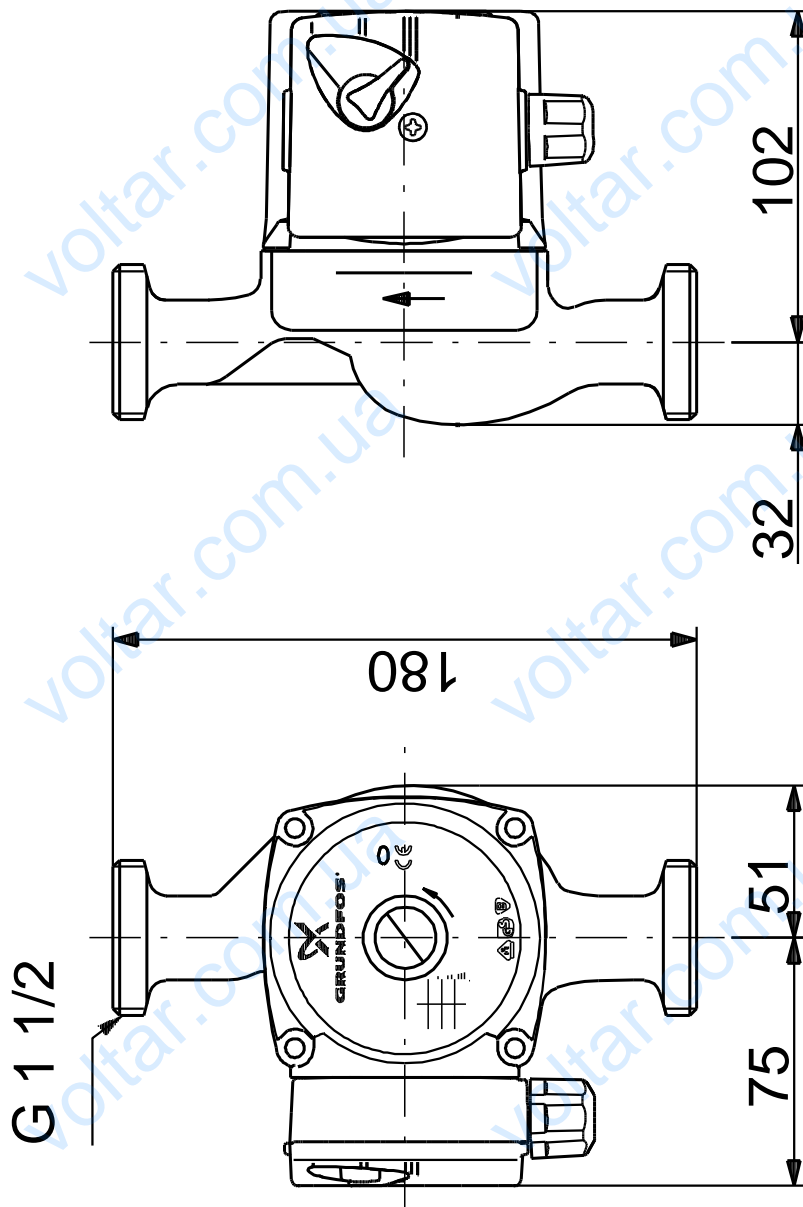
96621354 UPS 25-70 180 50



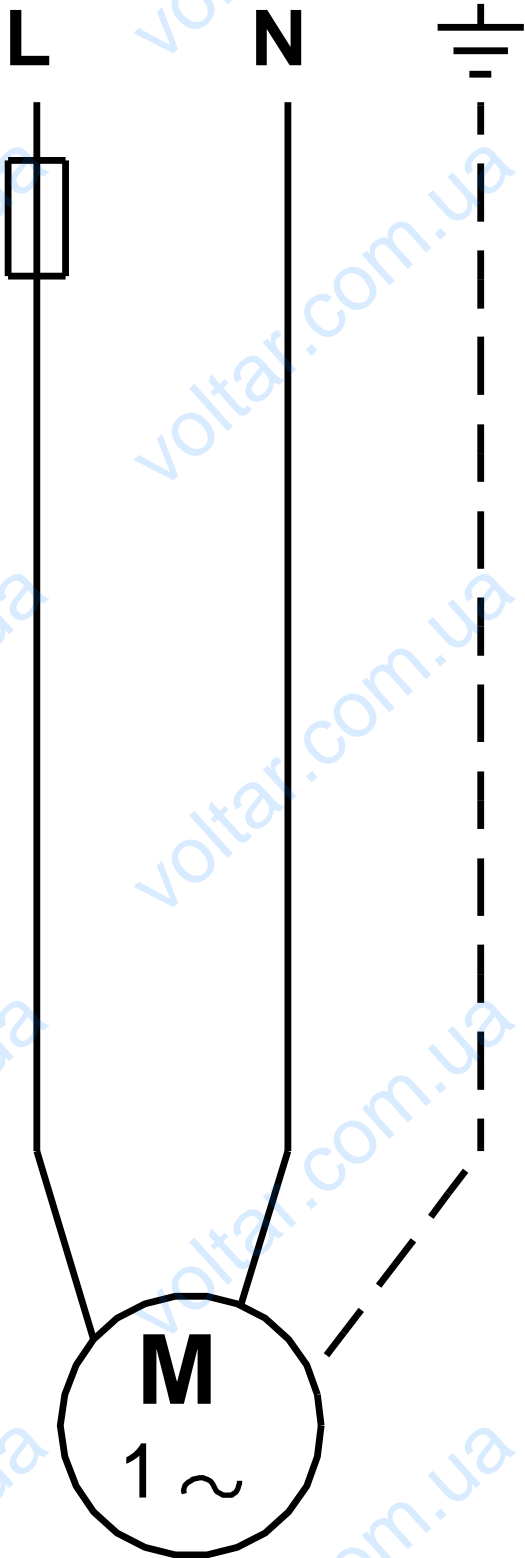
		UPS 25-70 180
		96621354
EAN		5700834972690
		3
		70
TF		95
		AAA
		EN-JL1030
		ASTM 30 B
		, PES/PP
		10
		G 1 1/2
		PN 10
		180
		2 .. 95 °C
		60 °C
		983.2 / ³
C		2.5
1:		95
2:		125
		149
		50 Hz
		1 x 230 V
		1: 0.46 A
		2: 0.58 A
		3: 0.65 A
		2.5
(IEC 34-5):		IP44
(IEC 85):		H
		2.4
		2.6
		0.004 ³



96621354 UPS 25-70 180 50



96621354 UPS 25-70 180 50



! [] .