

1 SOLOLIFT2 CWC-3



: 97775316

Sololift2 CWC-3 -

Sololift2 CWC-3

Sololift2 CWC-3

Ø36 40

Ø22-40

DN100

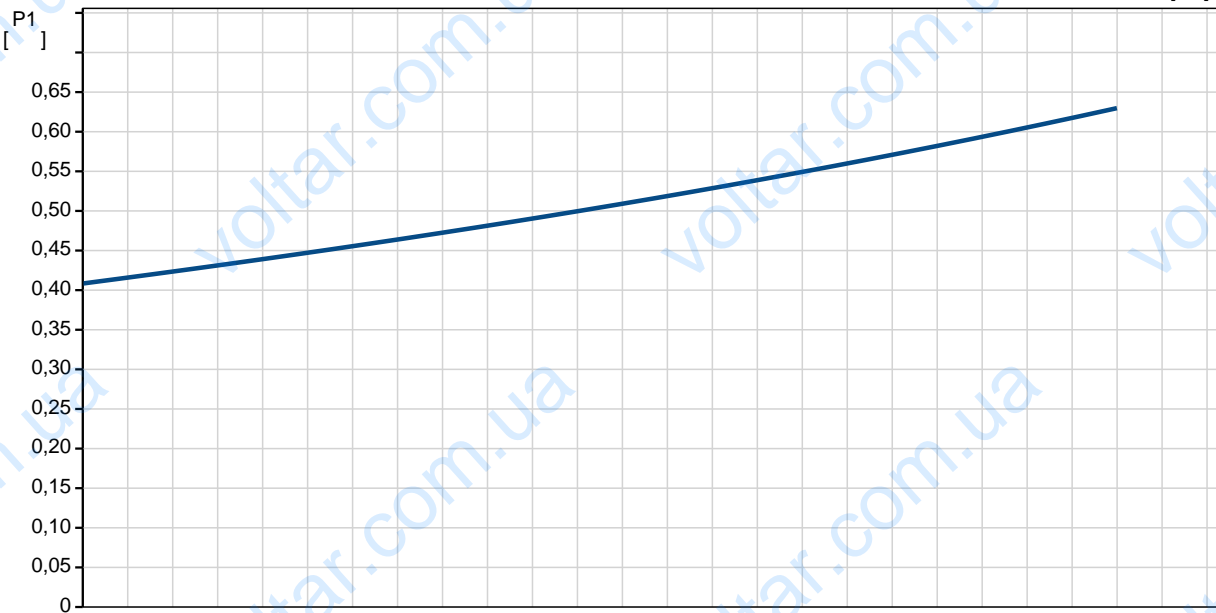
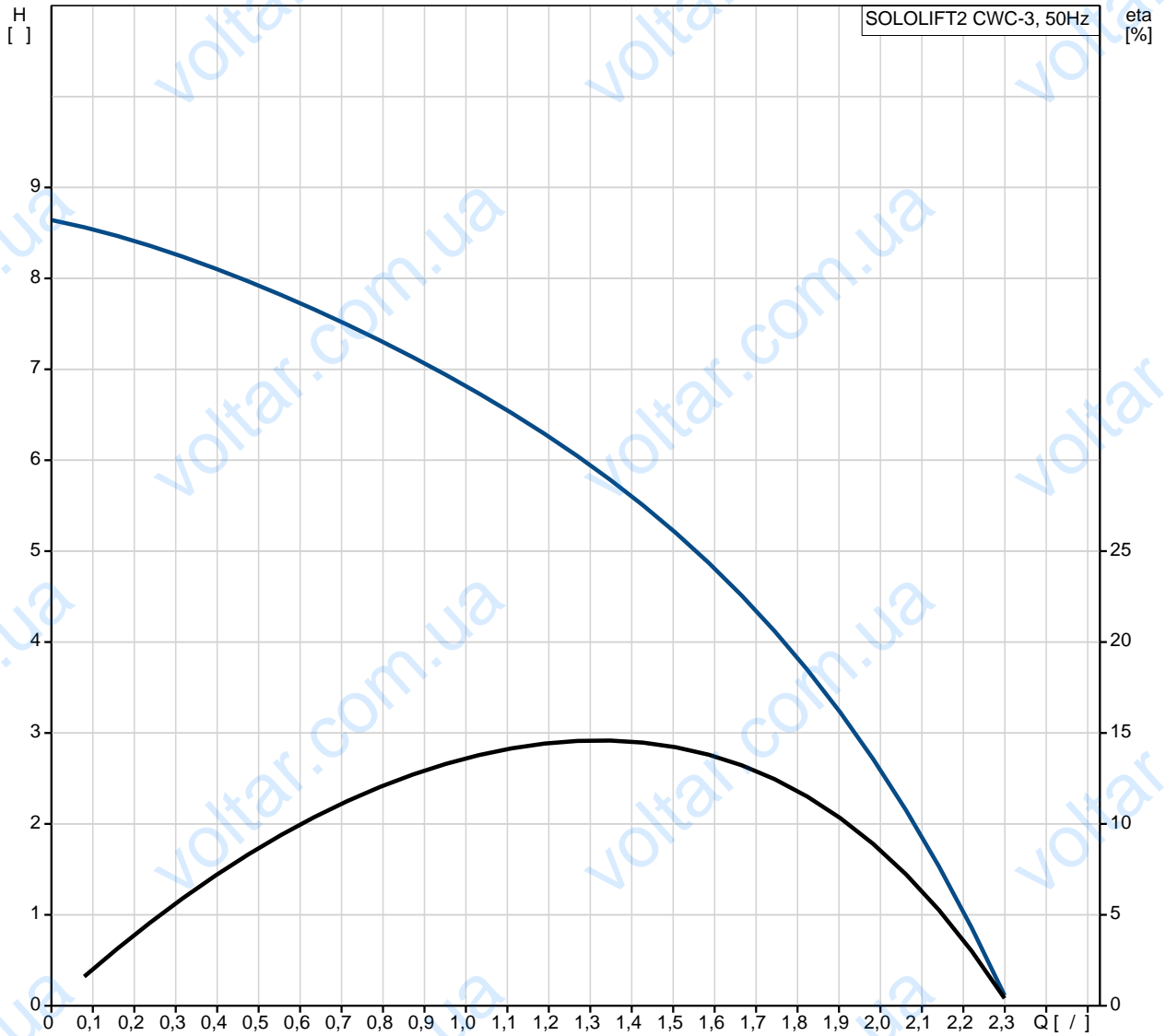
EN12050-2,

: 50 °C
: 998.2 / 3

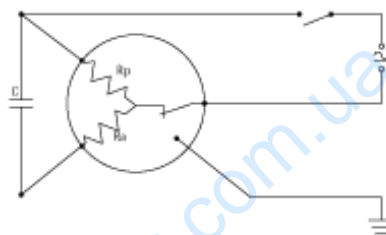
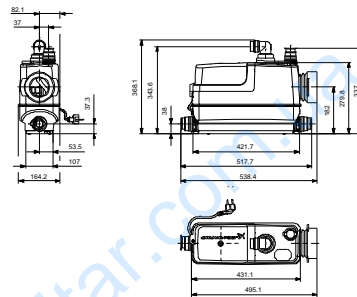
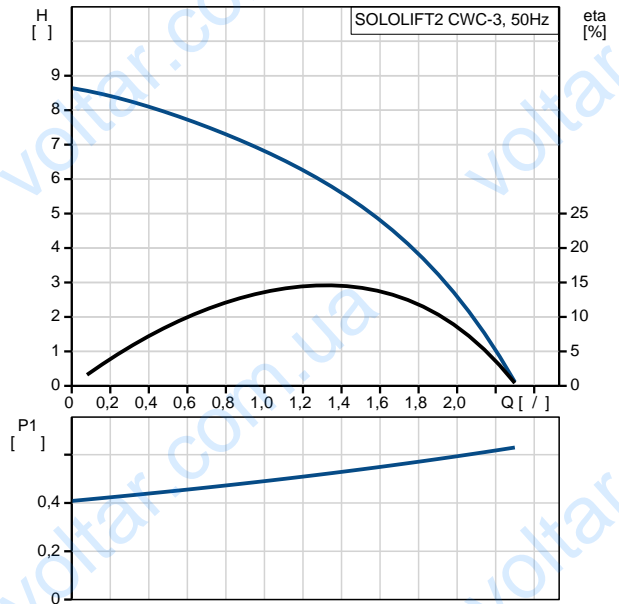
: CE,TR,LGA,VDEEMV,VDE

	- :	ISO9906:2012 3B
	:	
	:	
	:	32/36/40, 36/40/50, DN 100
	:	22/25/28/32/36/40
	:	3X0,75MM2
	- :	
	- P1:	620
	:	50 Hz
	:	1 x 220-240 V
	:	3 A
Cos phi -	- :	0,92
	:	2800 /
	(IEC 34-5):	IP44
	(IEC 85):	F
	:	1.2
	:	H05VV-F
	:	SCHUKO
	:	
	:	8.09
	:	9.69

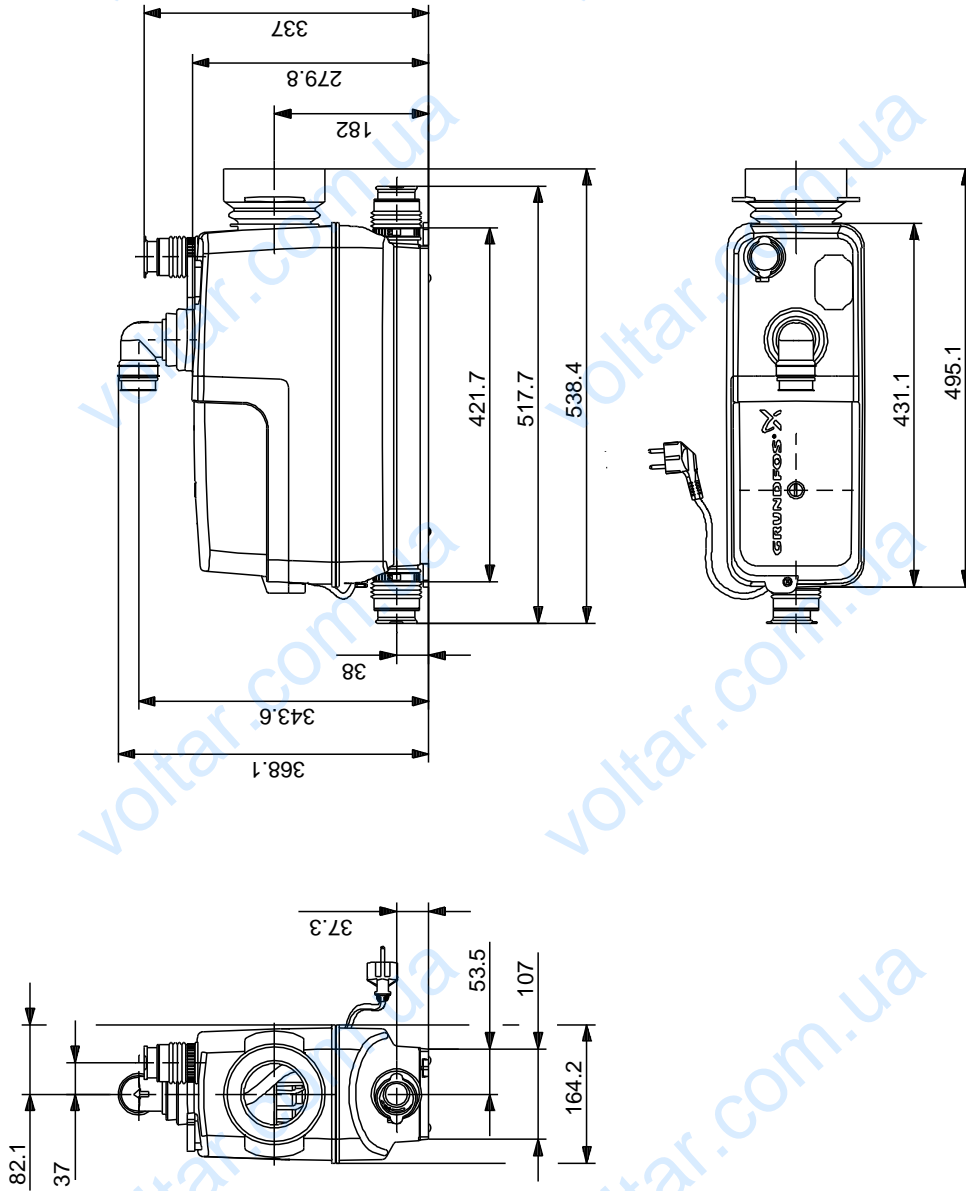
97775316 SOLOLIFT2 CWC-3 50



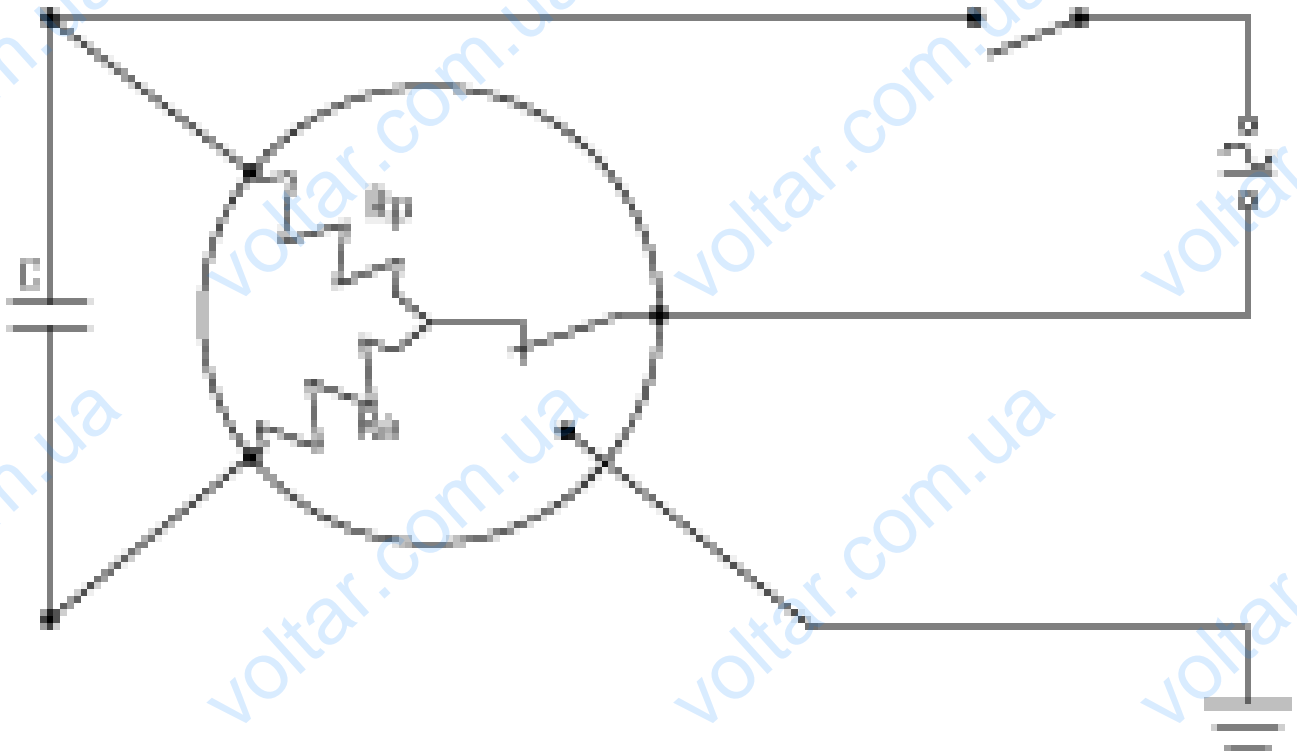
: SOLOLIFT2 CWC-3	
: 97775316	
EAN	: 5710624187258
:	
:	
: 8.5	
: CE,TR,LGA,VDEEMV,VDE	
- : ISO9906:2012 3B	
:	
:	
: 32/36/40, 36/40/50, DN 100	
: 22/25/28/32/36/40	
: 3X0,75MM2	
:	
: 50 °C	
:	
: 998.2 / 3	
- :	
- P1:	620
:	50 Hz
:	1 x 220-240 V
:	3 A
Cos phi -	: 0,92
:	2800 /
(IEC 34-5):	IP44
(IEC 85):	F
:	THERMIK S06-150-05
:	1.2
:	H05VV-F
:	SCHUKO
:	
:	8.09
:	9.69
:	



97775316 SOLOLIFT2 CWC-3 50



97775316 SOLOLIFT2 CWC-3 50



! [], .