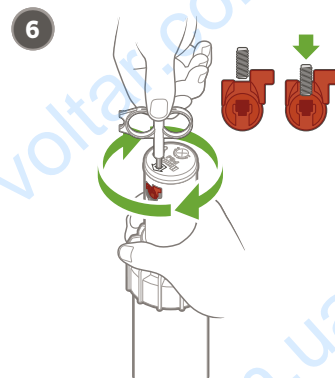
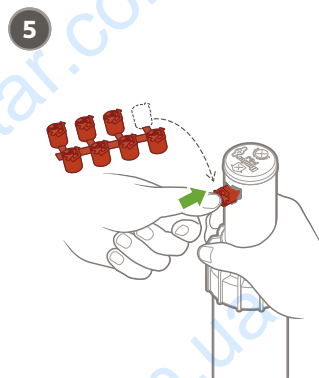
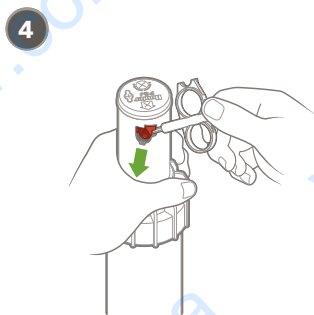
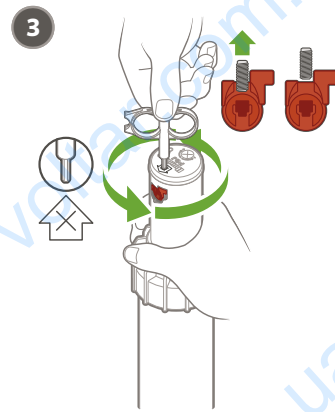
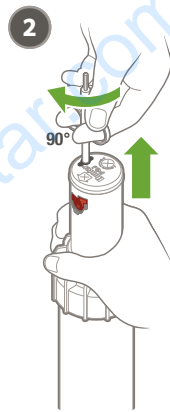
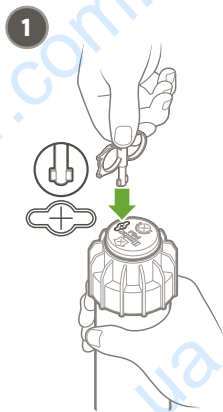
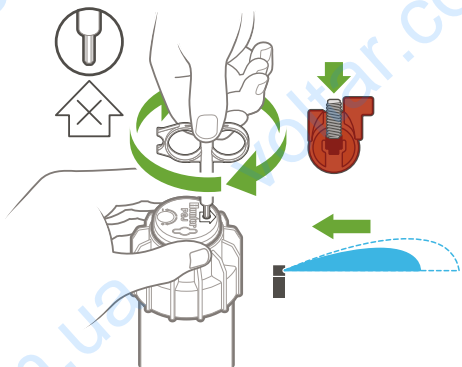
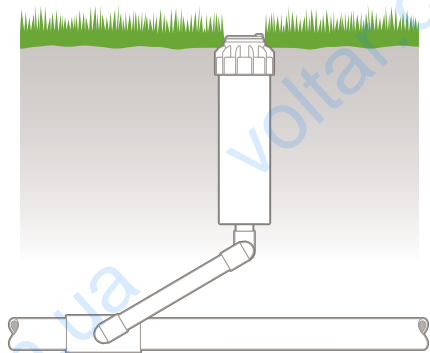
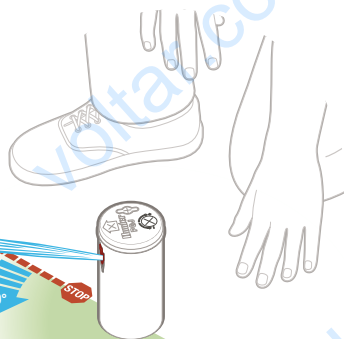


PGJ

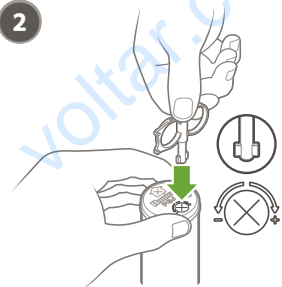




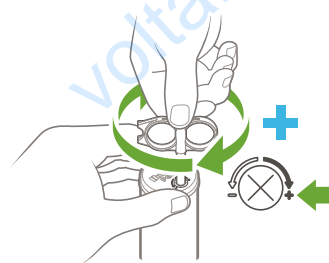
1



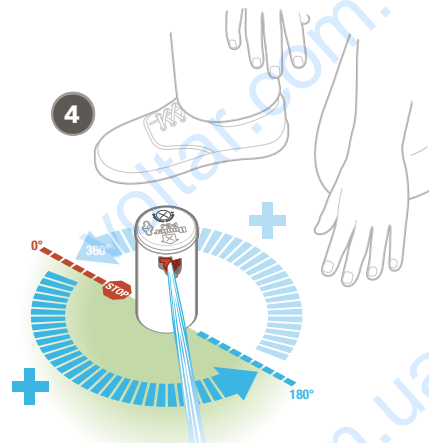
2



3



4





.75



1.7-3.8 Bar
170-380 kPa
30-50 PSI



2.2-3.4 l/m
0.6-0.9 GPM



4.6 m-5.2 m
(15'-17')



1.0



1.7-3.8 Bar
170-380 kPa
30-50 PSI



3.0-4.2 l/m
0.9-1.1 GPM



5.5 m-5.8 m
(18'-19')



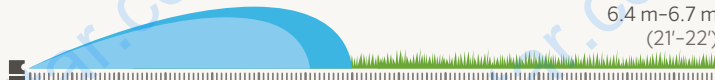
1.5



1.7-3.8 Bar
170-380 kPa
30-50 PSI



4.5-6.7 l/m
1.3-1.7 GPM



6.4 m-6.7 m
(21'-22')



2.0



1.7-3.8 Bar
170-380 kPa
30-50 PSI



5.6-9.3 l/m
1.7-2.3 GPM



7.3 m-7.6 m
(24'-25')



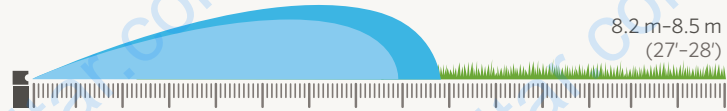
2.5



1.7–3.8 Bar
170–380 kPa
30–50 PSI



7.6–10.9 l/m
2.2–2.8 GPM



8.2 m–8.5 m
(27'–28')



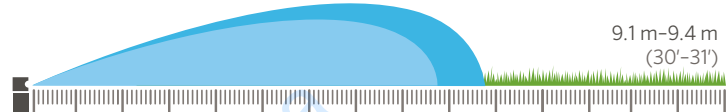
3.0



1.7–3.8 Bar
170–380 kPa
30–50 PSI



8.5–13.7 l/m
2.5–3.4 GPM



9.1 m–9.4 m
(30'–31')



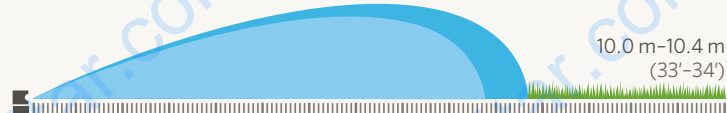
4.0



1.7–3.8 Bar
170–380 kPa
30–50 PSI



13.3–16.7 l/m
3.7–4.3 GPM



10.0 m–10.4 m
(33'–34')



5.0



1.7–3.8 Bar
170–380 kPa
30–50 PSI



17.0–20.5 l/m
4.7–5.3 GPM



11.0 m–11.3 m
(36'–37')